

**avast! Endpoint Protection (Plus)  
and  
avast! Endpoint Protection Suite (Plus)**

**Installation Guide**



### Introduction to avast! Endpoint Protection

The avast! Endpoint Protection range comprises 4 products which enables you to choose the one that best fits your requirements.

- **avast! Endpoint Protection** provides protection for all the computers on your network, with the exception of servers, based on the award-winning avast! Pro Antivirus.
- **avast! Endpoint Protection Suite** provides protection for all the computers on your network, including servers, based on the award-winning avast! Pro Antivirus and avast! Server Edition.
- **avast! Endpoint Protection Plus** provides the same protection as avast! Endpoint Protection, but with the addition of an antispam filter and silent firewall.
- **avast! Endpoint Protection Suite Plus** provides all the same protection as Endpoint Protection Suite, with the addition of an antispam filter and silent firewall.

All Endpoint Protection products have been specifically designed to make the administration of your computer network as simple as possible. As well as providing protection for all the computers on your network, the central **Administration Consoles** allow you to install avast! antivirus on all your computers remotely, to centrally manage updates and scheduled scans, to receive real-time security alerts and reports, and to receive automatic notifications whenever a new computer is connected to the network. You can choose the console most suitable for managing your network:

The **Small Office Administration Console** is a web-based management console designed primarily for small networks of up to 199 workstations. It's a simple and easy to use program to help you both deploy and manage avast! antivirus on your network and so keep your network free of viruses and other malware. It does not require a server Operating System and, once installed, you can access it from any computer with an internet connection.

- Web-based console displays all current issues and recommended solutions.
- Suitable for managing networks of up to 199 PCs.
- Easy to navigate interface offers user friendly access to all program functions.
- Built for simplicity: does not require full network administrator skills to operate.
- Remote installation and updates saves time and cost of traditional deployment on individual workstations.
- Auto-discovery of new/unprotected computers whenever they are connected to the network.

- Ability to remotely schedule and run scanning jobs – jobs can be scheduled to run at night or whenever computers are not in use.
- Real-time alerts are sent immediately to the console when any infection or suspicious activity is detected.
- Comprehensive reporting allows you to define what is reported and how often.

For larger networks of up to 1000 PCs, the **Enterprise Administration Console** is a desktop application for system administrators, which provides more advanced management capability.

The avast program which is deployed on your network computers is referred to throughout the rest of this user guide as the "**Managed client**".

## Managed Clients – key features

|  | EP  | EPS   | EP+   | EPS+  |
|--|---|---|---|---|
| <b>DESKTOP:</b>  |   |   |   |   |
| <b>Supports the 64-bit platforms</b> of Windows Vista and Windows 7.   |    |    |    |    |
| <b>Boot time scanner</b> scans for infections before the operating system starts and before a virus can be activated.              |    |    |    |    |
| <b>Multiple real-time shields</b> continuously monitor your network for potential infections and suspicious activity.              |    |    |    |    |
| <b>avast! Sandbox</b> allows you to browse the web or run other applications in a safe “virtual” environment.                      |    |    |    |    |
| <b>avast! SafeZone</b> – creates a new desktop in which applications can be run invisibly, ideal for online banking, shopping etc. |  |  |  |  |
| <b>avast! CommunityIQ</b> –ensures the most up to date virus definitions based on the experience of the global avast! community.   |  |  |  |  |
| <b>avast! WebRep</b> – provides information on a website’s reliability based on feedback from the avast! Community.                |  |  |  |  |
| <b>Wake-up/scheduled scanning</b> allows you to schedule scans to be run even when the computer is not in use.                     |  |  |  |  |
| <b>Intelligent Scanner</b> uses a whitelist of safe applications to reduce the number of files that are scanned.                   |  |  |  |  |

|   | EP  | EPS   | EP+   | EPS+  |
|---|---|---|---|---|
| <b>Silent/Gaming mode</b> automatically detects full-screen applications and disables pop-ups without compromising security.  |    |    |    |    |
| <b>Green computing:</b> leaves a minimal environmental footprint due to its highly efficient use of resources.  |    |    |    |    |
| <b>Antispam and phishing filter</b> to help manage unwanted emails.   |    |    |    |    |
| <b>Silent firewall</b> stops hackers using heuristic and behavioral analysis.   |    |    |    |    |
| <b>SERVER:</b>  | EP  | EPS   | EP+   | EPS+  |
| <b>Integrated protection for both email and file server:</b> includes support for clustering (even in active-active mode) and integrates perfectly with exchange via Microsoft's own Virus Scanning APIs. |    |    |    |    |
| <b>SharePoint Server Plug-in:</b> tightly integrates with SharePoint 2003/2007/2010 servers via Microsoft's own AV interfaces.  |  |  |  |  |
| <b>Low resource requirements:</b> light on system resources.  |  |  |  |  |

## System Requirements

The following system requirements are recommended in order to install and run **avast! Endpoint Protection (Plus)** or **avast Endpoint Protection Suite (Plus)**:

### Managed client for workstations (Endpoint Protection/Suite):

- Windows 2000 Professional Service Pack 4, Windows XP Service Pack 2 or higher (any edition, 32 or 64 bit)/Windows Vista (any edition, 32 or 64 bit)/Windows 7 (32/64 bit)
- 256 MB RAM
- 300 MB free hard disk space

### Managed client for workstations (Endpoint Protection Plus/Suite Plus):

- Windows XP Service Pack 2 or higher (any edition, 32 or 64 bit)/Windows Vista (any edition, 32 or 64 bit)/Windows 7 (32/64 bit)
- 256 MB RAM
- 380 MB free hard disk space

### Managed client for servers (avast! Endpoint Protection Suite/Suite Plus only)

- Windows Server 2003 (x32bit/64 bit), Windows Server 2008/R2 (any edition, excluding Core Installation), Windows SBS 2011
- 256 MB RAM (512MB if running Windows server 2008)
- 200 MB of free hard disk space

### Avast! Small Office Administration:

- Microsoft Windows XP (any edition except Home Edition) with latest Service Pack 3, 32-bit only  
Windows Vista (any edition, excluding Starter Edition and Home Edition) with latest Service Pack, 32-bit or 64-bit  
Windows 7 (any edition except Starter Edition and Home Edition) with latest Service Pack, 32-bit or 64-bit  
Windows Server 2003 (all editions with latest Service Pack), 32-bit or 64-bit  
Windows Server 2003 R2 (all editions with latest Service Pack), 32-bit or 64-bit  
Windows Server 2008 (all editions with latest Service Pack, excluding Server Core), 32-bit or 64-bit  
Windows SBS 2011.
- 1 GB RAM or above, depending on requirements of operating system and other 3<sup>rd</sup> party software installed
- A minimum of 900 MB free hard disk space for the initial installation
- Internet connection (to download and register the product, for automatic updates of the Mirror)
- Valid SMTP Server within reach of the server
- Windows workgroup or active directory network
- Internet connection with Silverlight 5 enabled browser e.g. Internet Explorer 7 or above.

### Avast! Enterprise Administration:

- Microsoft Windows XP (any edition except Home Edition) with latest Service Pack 3, 32-bit only  
Windows Vista (any edition, excluding Starter Edition and Home Edition) with latest Service Pack, 32-bit or 64-bit  
Windows 7 (any edition except Starter Edition and Home Edition) with latest Service Pack, 32-bit or 64-bit  
Windows Server 2003 (all editions with latest Service Pack), 32-bit or 64-bit  
Windows Server 2003 R2 (all editions with latest Service Pack), 32-bit or 64-bit  
Windows Server 2008 (all editions with latest Service Pack, excluding Server Core), 32-bit or 64-bit  
Windows SBS 2011.
- Full Microsoft SQL Server 2008 R2 or free Microsoft SQL Server 2008 R2 Express (supplied as an optionally installable component with avast! Enterprise Administration)
- 256 MB RAM (512 MB recommended), depending on requirements of operating system and other 3<sup>rd</sup> party software installed
- 900 MB free hard disk space
- Internet connection (to download and register the product, for automatic updates of the Mirror)
- Valid SMTP Server within reach of the server
- Windows workgroup or active directory network

#### **Note:**

avast! Small Business Console and managed clients are not supported (cannot be installed and won't run) on DOS, Microsoft Windows 3.x, Microsoft Windows NT 3.x, Microsoft Windows NT 4.0, Microsoft Windows 95, Microsoft Windows 98, Microsoft Windows ME, or any other operating systems which aren't specified as supported.

Other 3<sup>rd</sup> party prerequisites will be installed during the setup by the installer if they are not present. These are the **Microsoft .NET Framework 4**, **Microsoft Silverlight 5** and other dependencies like **Microsoft Windows Installer**, etc.

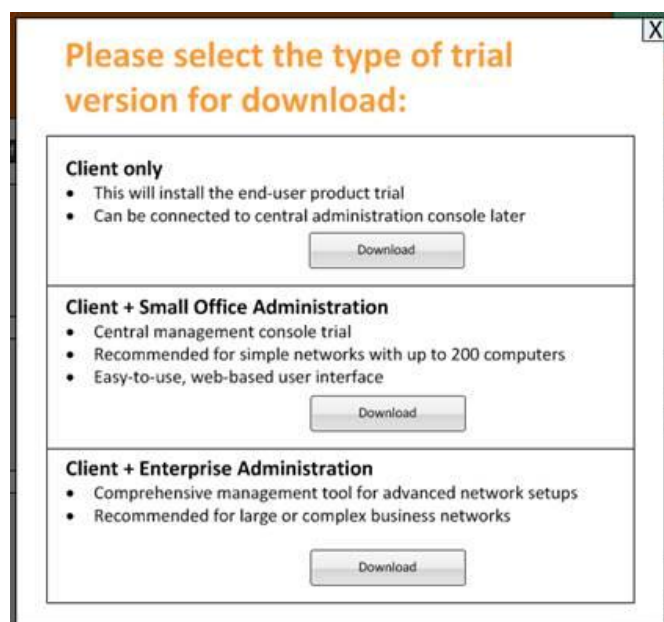
In all cases, it is recommended to have the latest Service Pack and a fully updated Operating System.

## How to install avast! Endpoint Protection on your network

The Endpoint Protection products are designed so that you can install and manage avast across your whole network from one central administration console. You can choose either the Small Office Administration Console – a web based administration console suitable for networks of up to 200 PCs, or the Enterprise Administration Console – a desktop application for system administrators for managing larger networks. However, if you do not require the central management features, you may choose not to install any central management console and instead install avast on your servers and/or workstations manually. See the later section “Installing the Client Software on your Network”.

If you have already purchased a license, you should have received an email from avast with instructions for downloading the installation file. Click on the link to download the file and save it onto your computer, in a location where you will easily be able to locate it, for example on your Windows Desktop.

If you have not yet purchased a license and you want to use the product for a 30-day trial period before you purchase, download the installation file from [www.avast.com](http://www.avast.com). After clicking the “Download” button, you can choose whether to download only the client software, the client software together with the Small Office Administration Console, or the client software with the Enterprise Administration Console:



When downloading the installation file, make sure to save the file in a location on your computer where you will easily be able to locate it.

The following pages will describe how to install the avast! Small Office Administration Console and how to install the avast! Enterprise Administration Console.

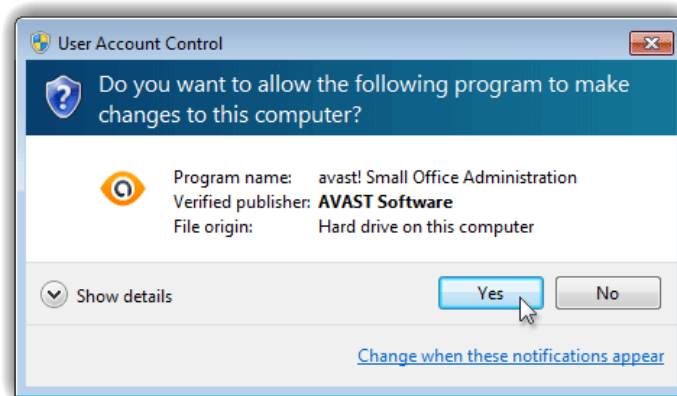
## Installing the avast! Small Office Administration Console

The following steps describe how to install the **avast! Small Office Administration Console**. Once the central management console is installed, you can then use it to remotely deploy avast on all your network machines.

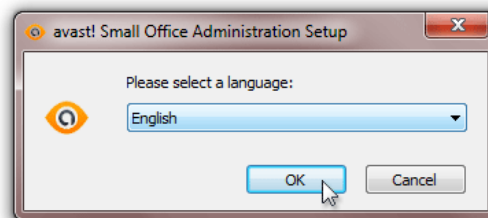
Once you have downloaded the installation file, locate it on your computer and double click it to start the installation. You will then be guided through the rest of the installation process to install the program on your computer. We recommend that you close any other applications before installing the program and follow the onscreen instructions. Note: your computer has to be connected to the internet during the installation process.



If you are prompted by a **User Account Control** dialog for permissions, click 'Yes' (or 'Continue' in **Windows Vista**) to begin the installation process.



Before the installation starts you can select your preferred language:

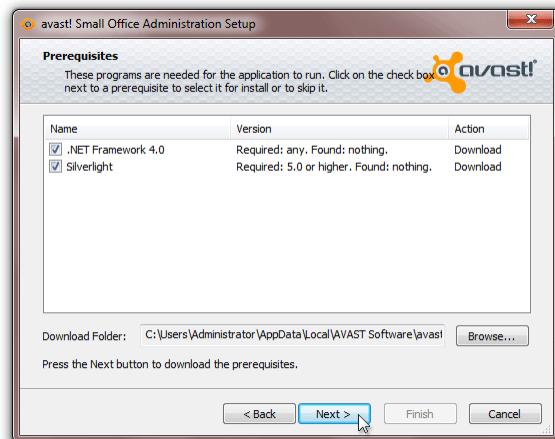


A quick check will now be done to identify whether there are any other requirements before the program can be installed.

If any requirements are identified, the following screen will then be displayed:

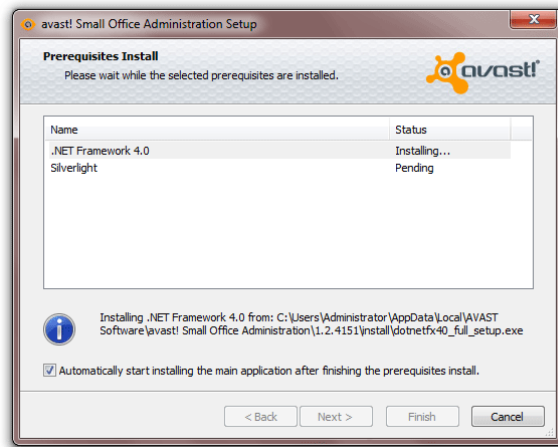


Just click "Next" to proceed and you will then see a list of the pre-requisites which need to be satisfied before the program can be installed.

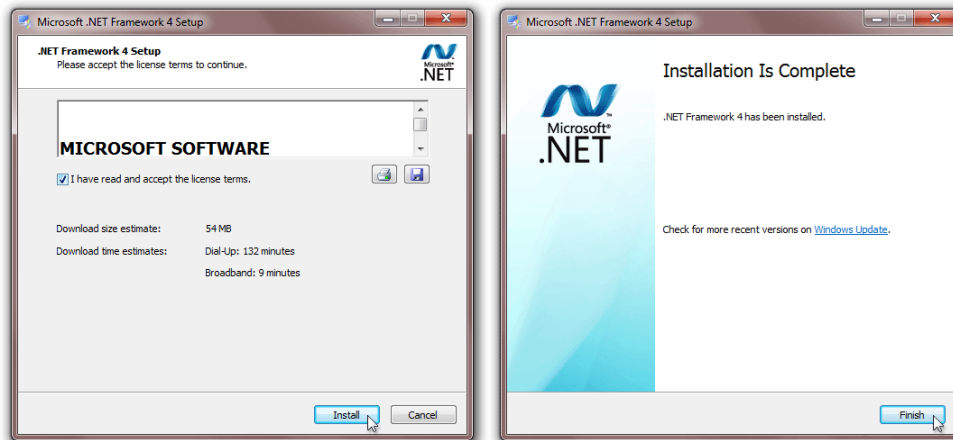


You can change the selection using the checkboxes, but in most cases keeping the default selection should be adequate. Click 'Next' to start the download and installation of the selected components to your system.

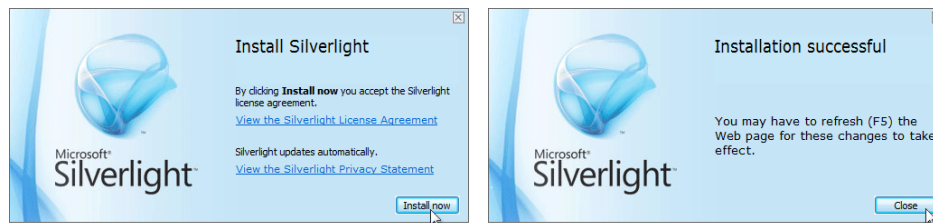
You will then see the installation progress. Depending upon the speed of your machine and the Internet connection, it may take some time to complete the prerequisites installation.



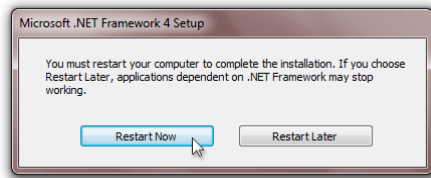
You may be asked to confirm the installation of the individual prerequisites, for example .NET Framework:



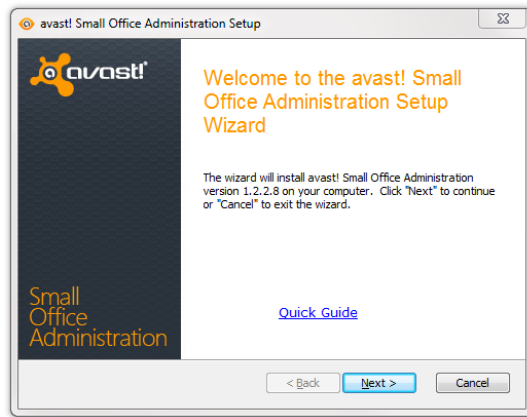
And Silverlight:



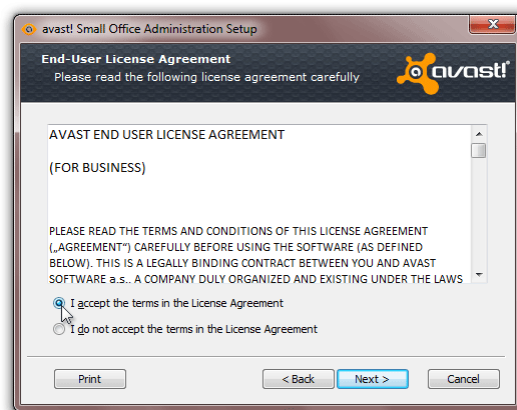
If you are prompted to re-start your computer, click “Restart Now” to prevent the installation from being terminated unexpectedly.



When the machine is restarted, the **avast! Small Office Administration Setup Wizard** will start automatically:



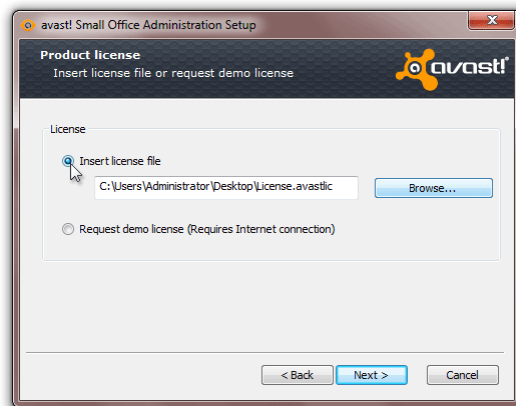
You now need to confirm that you have read and accept the terms of the license agreement by clicking the appropriate button and then click “Next” to proceed.



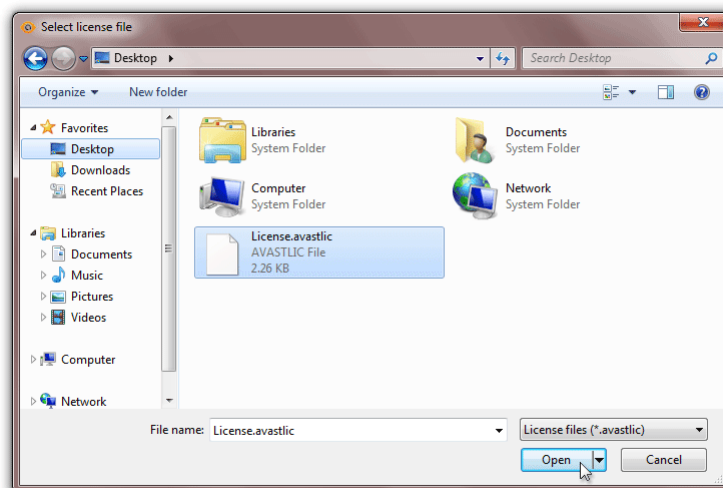
You will now be invited to insert a valid license file. Unless you want to use the program first in demo mode, it is recommended to provide a license file immediately.

Alternatively, you can request a demo license, which will allow you to use the program in demo mode for 30 days. To request a demo license, you will need to be connected to the internet as the demo license will be automatically downloaded from the avast server during the installation.

During the 30 day demo period you will need to purchase and insert a valid license file to continue to use the product, otherwise the avast! Small Office Administration Console will not be able to communicate with any connected machines and you will not be able to deploy the avast! Managed Client onto your network after the demo period expires.

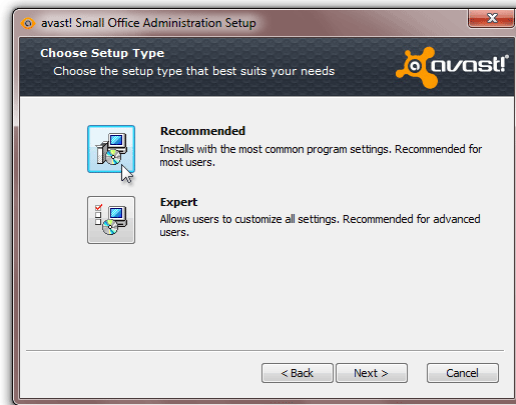


In order to insert a license now, the license must first have been saved on your computer. To locate your license on your computer, click the "Browse" button, then click "Open" and the path to our license will be inserted automatically.

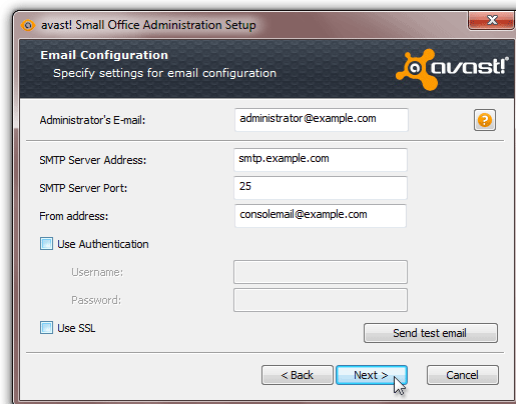


After the installation is completed, you can continue to use the product for **12, 24, or 36 months** from the date of purchase, depending on the purchased license period.

You can now select the type of installation. The recommended installation type is “Recommended” unless you are an experienced system administrator and want to e.g. specify a folder other than the default folder for storing the installation files or use your own MS SQL Database.



On the next screen, you should enter the details of your email settings. This is necessary if you want to be able to send emails from the Console for example if you want to use the option to deploy the avast client remotely by email, or if you want to receive system reports and messages.

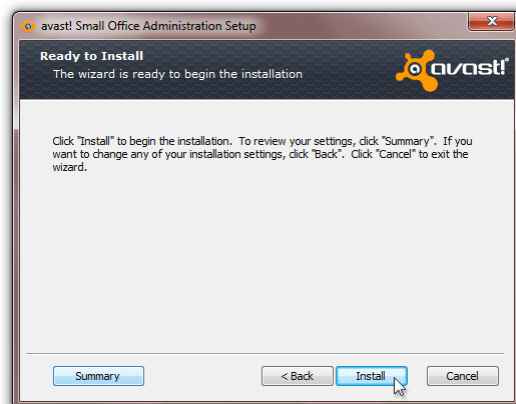


- **Administrator's e-mail** – the e-mail address of the network administrator or person responsible for managing the **avast! Small Office Administration Console**, e.g. **administrator@example.com**.
- **SMTP Server Address** – the Host Name or IP address of your outgoing e-mail server e.g. **smtp.example.com** or **192.168.1.25**.
- **SMTP Server Port** – the Port number of your outgoing e-mail server. SMTP protocol uses TCP port number **25** by default.
- **From address** – the e-mail address that will appear in e-mail notifications sent by the **avast! Small Office Administration Console**.
- **Use Authentication** - if your outgoing e-mail server requires **Username** and **Password** authentication.
- **Use SSL** - if your outgoing e-mail server requires an encrypted connection using SSL protocol (Secure Sockets Layer).

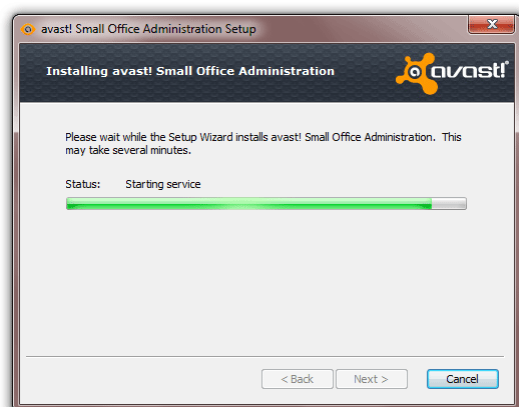
Finally, you will be asked for a password which you will need to enter later when logging on to the Administration Console, so make sure it is a password that you will be able to remember!



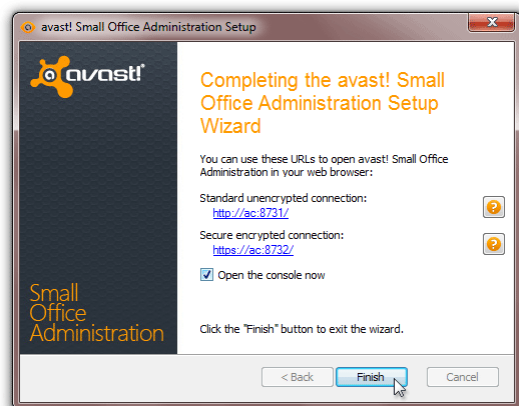
You will now see a final screen before the installation begins. To review all the initial setup details and to check everything is correct, just click on Summary. You can use the “Back” button to go back and make any changes and when you are ready just click “Install”



After clicking “Install”. You will see the installation progress. Depending upon the speed of your machine and the Internet connection, it may take some time to complete the installation.



When the installation is complete, a new box will appear with a link, which you can click to open the Administration Console in your computer’s web browser. You can also choose whether you want to open it immediately in default web browser after exiting the setup wizard. Finally, click “Finish” to close the avast! Small Office Administration Setup Wizard.

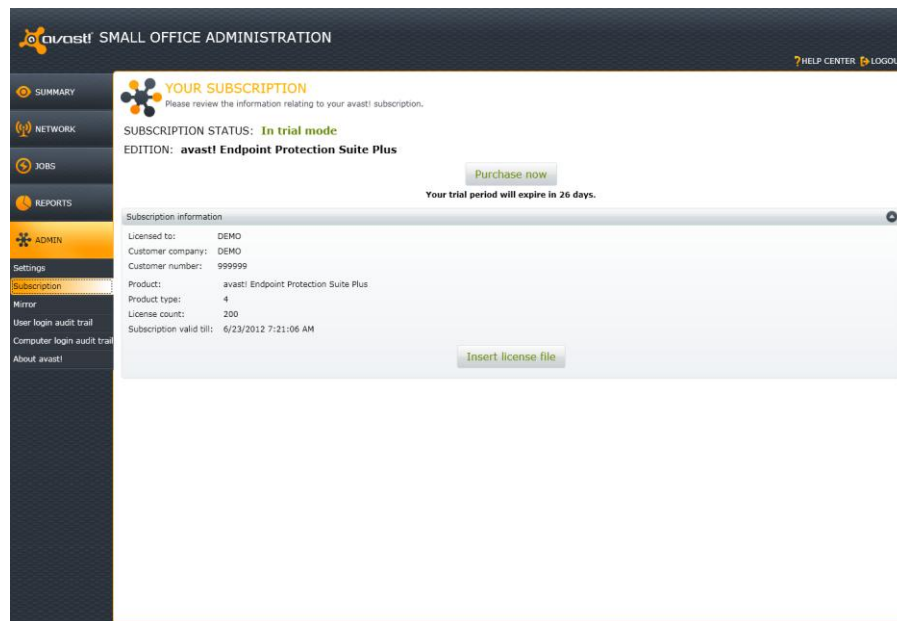


A shortcut will also be installed on your desktop which you can use in future to launch the console on the same computer. You can now use the Administration Console to remotely deploy avast on the other machines on your network, or to send an email to the other computer users with instructions for downloading and installing avast! on their machines. Alternatively, you can manually install avast! on each machine, for example, by downloading the client installation file and copying it from a USB to each computer – see the later section “Installing the Client Software on your network”.

## Licensing

During the installation process, you were able to insert a valid license, or you could choose to use the Administration Console in trial mode for up to 30 days, during which time you can familiarize yourself with the basic functions.

To manually insert a license after the program is installed, click on the “Administration” tab in the Console and then “Subscription”. Under “Subscription information” you will see a summary of your current subscription status. Next click on “Insert license file” and then locate the license file on your computer. Click on it to select it and then click “Open” and your license file will be automatically inserted. You can now continue to use the program for the duration of your license.

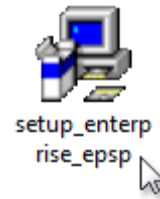


If you have not yet purchased a license file, click on “Purchase now” which will open the avast website where you can select the type of license you wish to purchase.

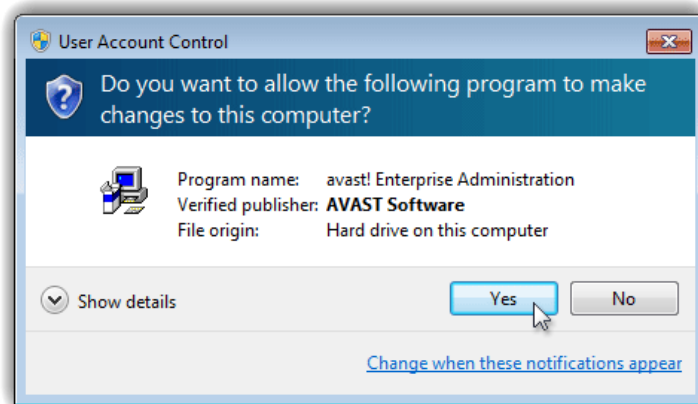
## Installing the avast! Enterprise Administration Console

The following steps describe how to install the **avast! Enterprise Administration Console**. Once the central management console is installed, you can then use it to remotely deploy avast on all your network machines.

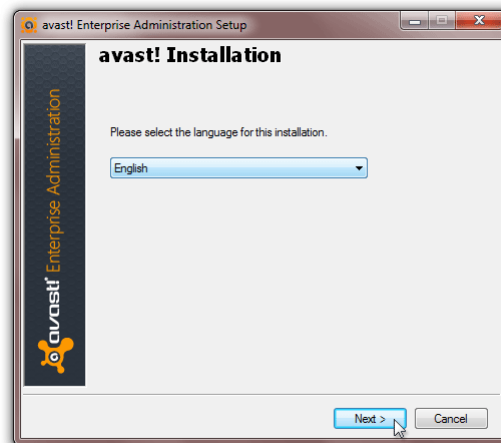
Once you have downloaded the installation file, locate it on your computer and double click it to start the installation. You will then be guided through the rest of the installation process to install the program on your computer. We recommend that you close any other applications before installing the program and follow the onscreen instructions. Note: your computer has to be connected to the internet during the installation process.



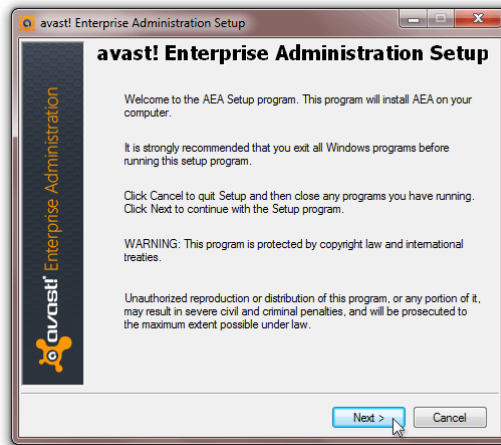
If you are prompted by a **User Account Control** dialog for permissions, click 'Yes' (or 'Continue' in **Windows Vista**) to begin the installation process.



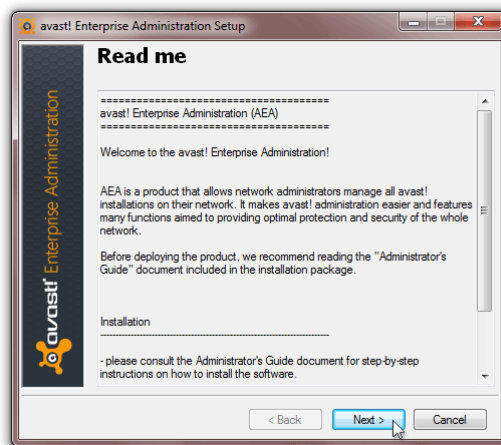
When the installation starts you can select your preferred language:



On the welcome screen click '**Next**' to continue.



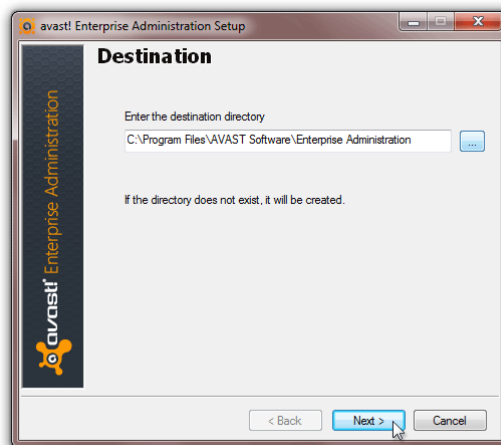
After reading the introduction on the **Read me** screen, click '**Next**' again.



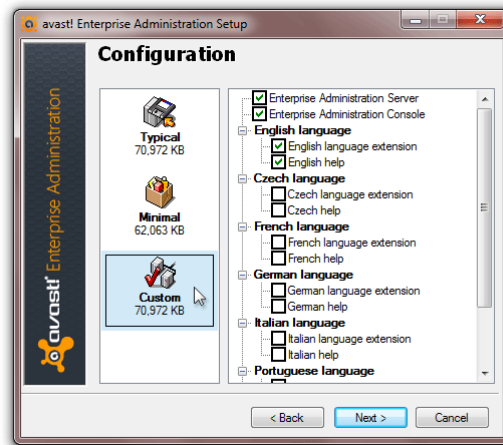
You now need to confirm that you have read and accept the terms of the **License Agreement** by selecting the option '**I agree**'. Then click '**Next**' to proceed.



On the following screen you can change the default **Destination** directory by entering the full path where you want to install **avast! Enterprise Administration**, or you can click on the button marked '...' on the right, and browse your computer to locate the installation folder. When the path is specified, or if you want to keep the default path, click '**Next**'.

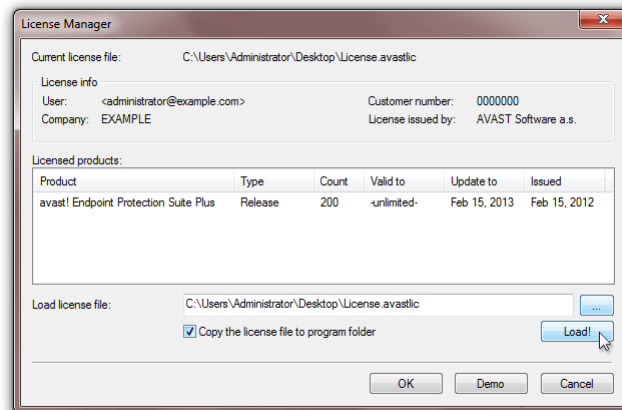


Besides the '**Typical**' and '**Minimal**' installations with predefined **Configurations**, on the next screen you can also select '**Custom**'. This allows you to add or remove individual program components and features in a checkbox list. Then click '**Next**' to continue.

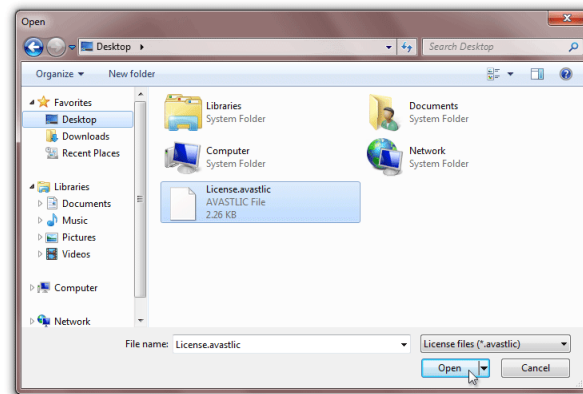


On the next screen, you can insert your license. Note that your license file must first have been saved to a location on your computer. Depending on the license you have, select one of these two options:

**Load license file** - If you have already purchased a license for e.g. **avast! Endpoint Protection** and you know where it is saved, you can enter its location in the box shown at the bottom of the **License Manager** screen.



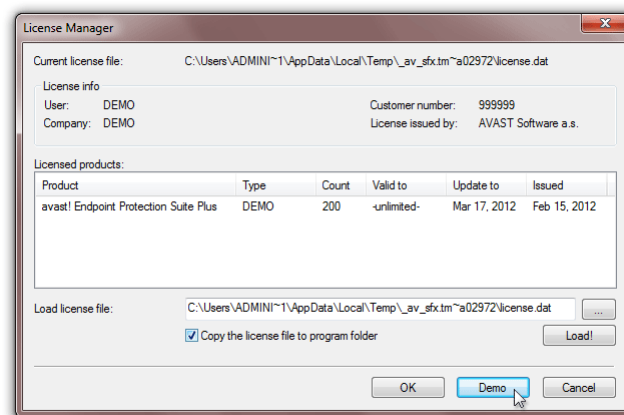
...or you can click button marked '...' on the right, and browse your computer to locate it.



Then click "Load" to insert the license file.

After the installation is completed, you can continue to use the product for **12, 24, or 36 months** from the date of purchase, depending on the purchased license period.

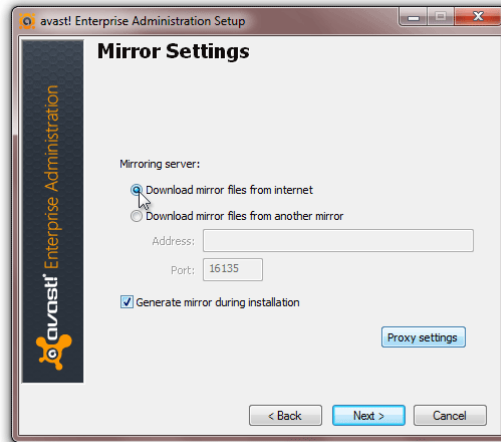
Alternatively, you can click the '**Demo**' button to download a time-limited demo license (this requires an Internet connection):



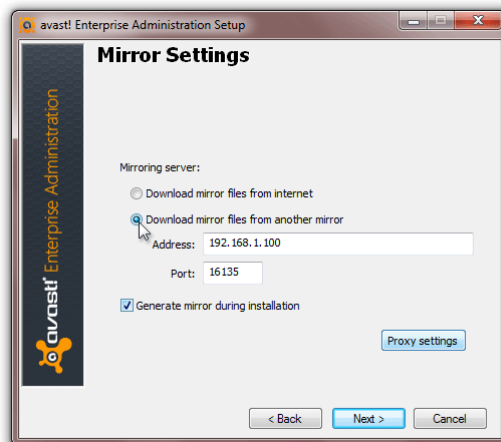
Then click "OK" to apply the Demo license.

During the 30 day demo period you need to purchase and insert a valid license file to continue to use the product, otherwise the avast! Enterprise Administration Console will not be able to communicate with any connected machines and you will not be able to deploy the avast! Managed Client onto your network after the demo period expires.

On the next screen you can adjust the **Mirror settings**. The Mirror is used to automatically distribute updates to all avast! Managed Clients on your network to ensure they are always completely up to date. The advantage of using the Mirror to distribute updates in this way is that the updates need to be downloaded only once from the AVAST update server, thus saving you bandwidth. Here you can specify whether this mirroring server will '**Download mirror files from the Internet**' (i.e. directly from the **AVAST** update server)...



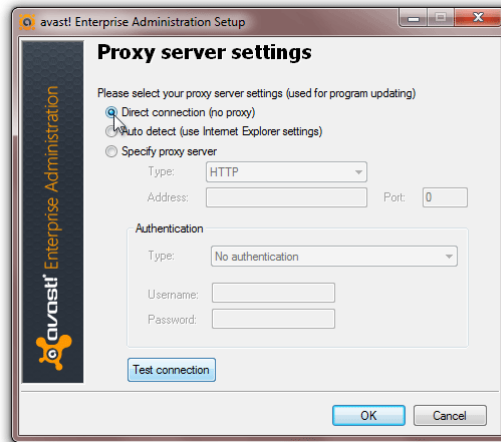
...or whether it will '**Download mirror files from another mirror**' in the case that you already have another mirroring server established. You will then need to specify its **Address** (e.g. **mirror.example.com** or **192.168.1.100**) and **Port** number (**16135** by default).



If you clear the checkbox '**Generate mirror during installation**', the **Mirror** will be downloaded and created in the background automatically after **avast! Enterprise Administration** is first started, or you can do it manually using the **mirror.exe** utility included within the installation folder. When it's done, click '**Next**' to continue.

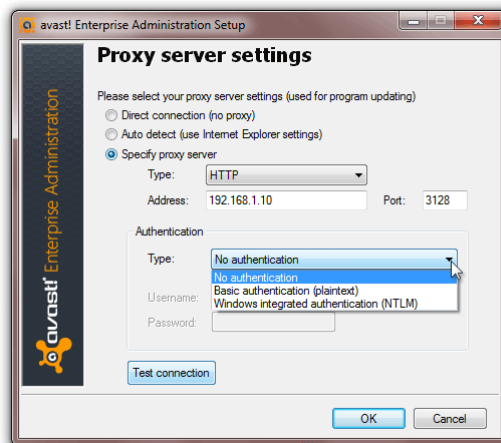
### Note:

If you download the **Mirror** manually, you need to keep it updated using a different connection than that specified in your **Internet Explorer** settings. Click the '**Proxy settings**' button, and then you can switch from the default option '**Auto detect (use Internet Explorer settings)**' to '**Direct connection (no proxy)**',

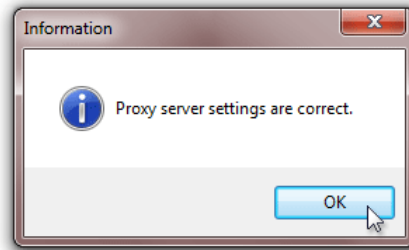


...or click '**Specify proxy server**' and enter all the necessary details used to connect your machine to the Internet, i.e.:

- **Type** - HTTP or **SOCKS v4** protocol.
- **Address** - IP address or **Host Name** of your Proxy Server, e.g. **192.168.1.10** or **proxy.example.com**.
- **Port** - Port number of your server, e.g. **3128**.
- **Authentication** - '**Basic Authentication (Plaintext)**' or '**Windows integrated authentication (NTLM)**' if you have an **HTTP Proxy Server** which requires **Username** and **Password**.

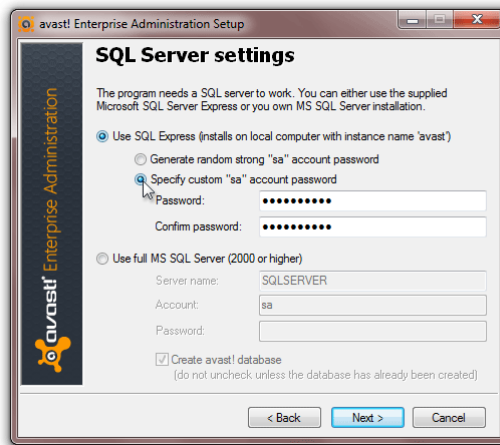


When it's done, click '**Test connection**' to verify your settings,



...and then click '**OK**' twice to confirm the test and apply your changes.

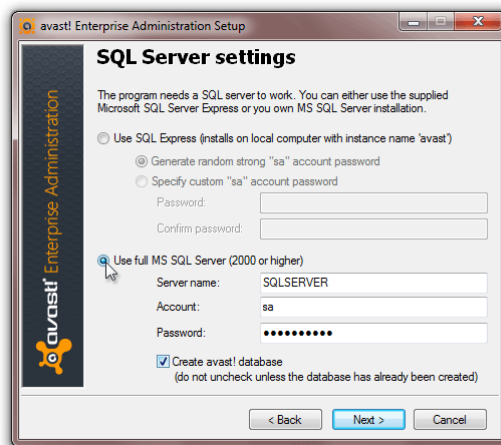
On the next screen you can select your preferred database server that will serve as data storage for all the policies, security settings and client information:



**Use SQL Express (installs on the local computer with instance name 'avast')** - if you want to install locally **Microsoft SQL Server 2008 R2 Express** supplied with **avast! Enterprise Administration**. Once you have selected this option, you must also choose whether you want to:

- **Generate a random strong "sa" account password** - if you don't need to know the password and prefer a random and highly secure **SA** account in supplied **Microsoft SQL Server 2008 R2 Express**, or
- **Specify a custom "sa" account password** - if you prefer to use your custom password for the **SA** account in the supplied **Microsoft SQL Server 2008 R2 Express**.

**Use full MS SQL Server** - if you want to use **Microsoft SQL Server 2008 R2** which is already running on your computer or on a remote machine.



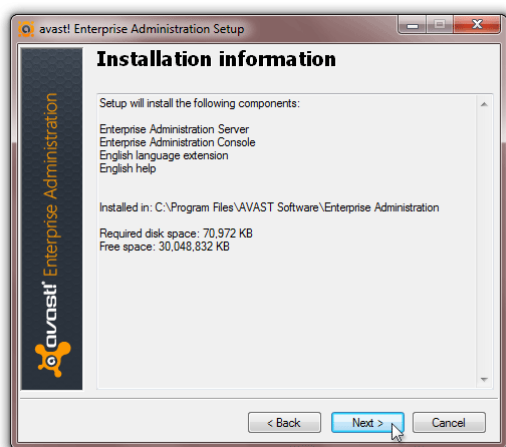
If you select this option, you will also need to specify the following details:

- **Server name** - type the **Host Name** of your SQL Server, if you are not using the default instance, followed by a backslash and the SQL Server **Instance Name**, i.e.:
  - **HOSTNAME** - if your SQL Server is running on a remote machine, or the same machine as **avast! Enterprise Administration**, and the default SQL Server **Instance Name** is used (i.e. **MSSQLSERVER**).
  - **(local)** - as an alternative if your SQL Server is running locally on the same machine as the **avast! Enterprise Administration**, and the default SQL Server **Instance Name** is used (i.e. **MSSQLSERVER**).
  - **HOSTNAME\INSTANCENAME** - if your SQL Server is running on a remote machine, or the same machine as **avast! Enterprise Administration**, and any other than the default SQL Server **Instance Name** is used (i.e. anything except **MSSQLSERVER**).
  - **(local)\INSTANCENAME** - as an alternative if your SQL Server is running on the same machine as **avast! Enterprise Administration**, and any other than the default SQL Server **Instance Name** is used (i.e. anything except **MSSQLSERVER**).

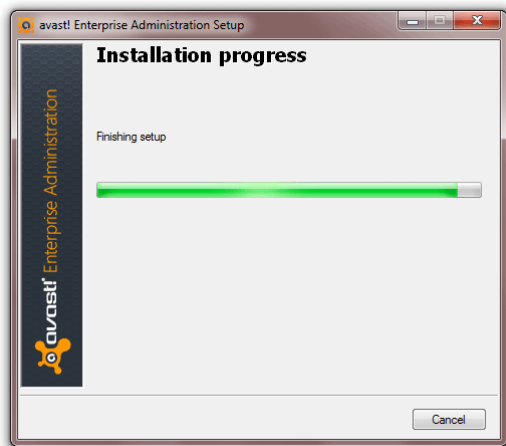
- **Account** - enter your SQL server account with unrestricted access to the database engine ("sa" account is predefined by default).
- **Password** - enter your password to the SQL server account specified above.
- **Create avast! database** - clear the checkbox only if you are connecting an existing database in SQL Server used by a previous instance of **avast! Enterprise Administration** of exactly the same version, and you want to keep all the data storage for all the policies, security settings and client information.

Click '**Next**' to continue.

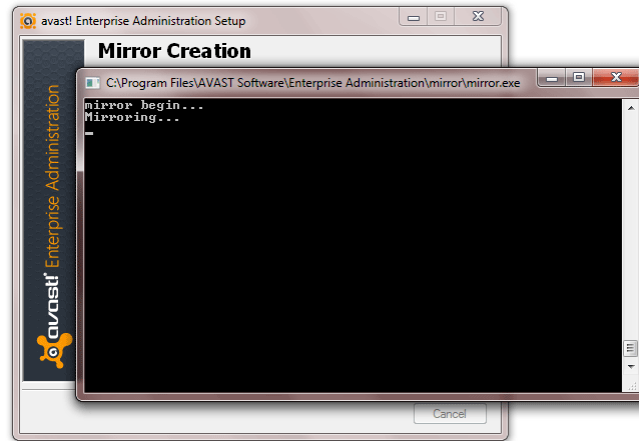
On the **Installation information** screen you can check your setup configuration before proceeding with the installation. If you missed something, just use the '**Back**' button to go back and change the configuration. When you have finished the configuration click '**Next**'.



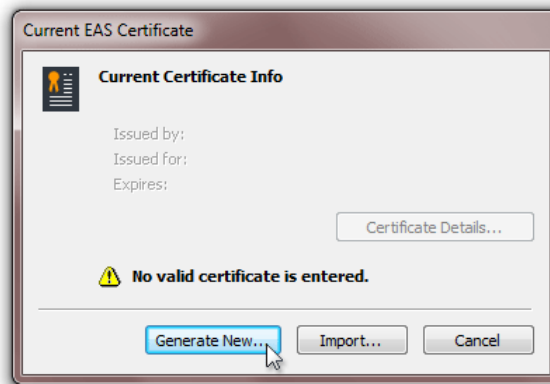
The Setup Wizard will then display the installation progress:



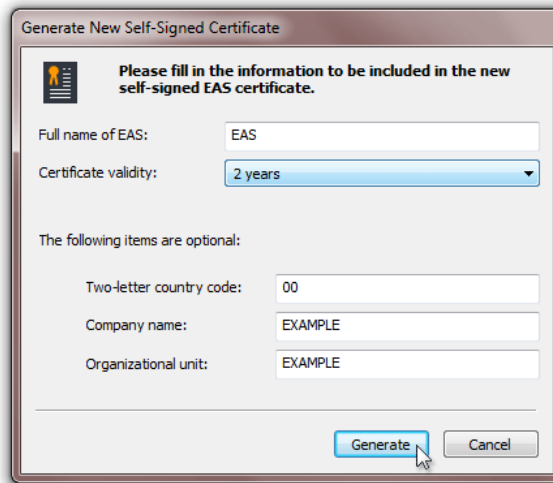
...and also the **Mirror Creation** status if you selected to generate the **Mirror** during the installation. Depending upon the speed of your machine, it may take a few minutes to complete.



Afterwards you will be asked for the current certificate information for **avast! Enterprise Administration Server**. Click '**Generate New...**',



...enter the information to be included in the new self-signed certificate, then click **'Generate'**.

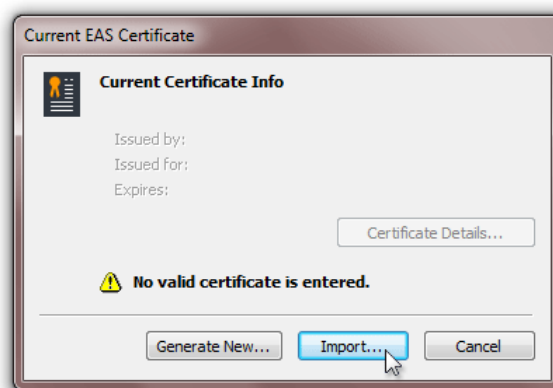


...and then click **'Close'**.

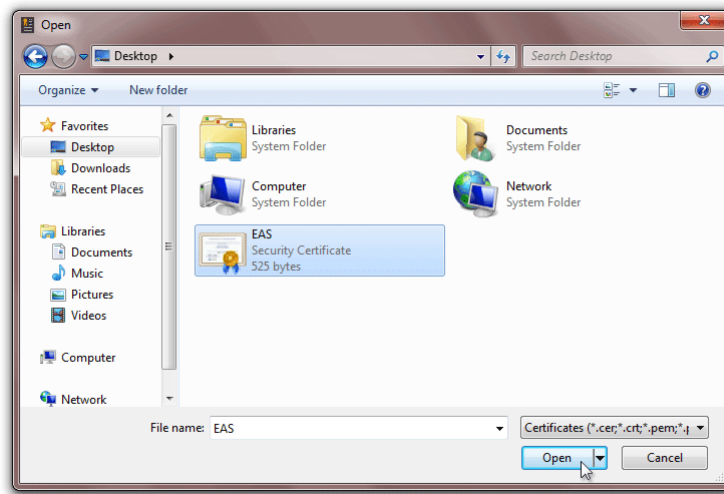


**Note:**

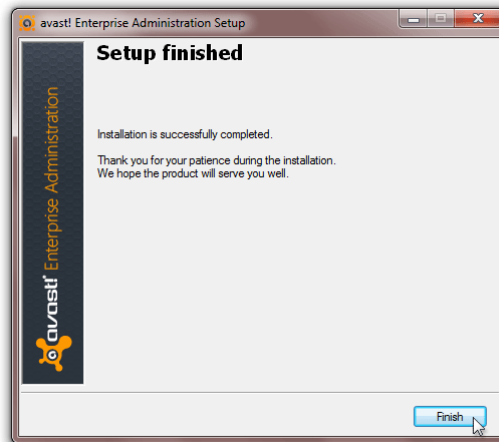
If you already have a backup file with a valid certificate for **avast! Enterprise Administration Server**, you can click **'Import'**,



...locate the file with certificate on your machine, and click 'Open'.



When the installation is successfully completed, click 'Finish' to close the **avast! Enterprise Administration Setup Wizard**.



A shortcut will also be installed on your desktop which you can use in future to launch the console. You can now use the Administration Console to remotely deploy avast! on the other machines on your network, or to send an email to the other computer users with instructions for downloading and installing avast! on their machines. Alternatively, you can manually install avast! on each machine, for example, by downloading the client installation file and copying it from a USB to each computer – see the next section “Installing the Client Software on your network”

### Installing the Client Software on your network

If you have installed the avast! Small Office Administration Console, or the avast! Enterprise Administration Console, you can use the console to deploy the client software remotely on all the computers on your network. This is usually the quickest and most convenient method – if you are using the Small Office Administration console, please refer to the Quick Start Guide, which describes the process for remotely deploying the managed clients. If you are using the Enterprise Administration console, this is described in step 3 of the 5 point start-up guide which appears when you launch the console.

Although the Endpoint Protection products are designed so that you can install and manage avast remotely across your whole network, if you do not require the central management features you may optionally install the avast! client software manually on your network machines, without any central administration console.

Similarly, if you have installed either of the avast! Small Office Administration Console, or the avast! Enterprise Administration Console, you may still install the clients manually on your network machines if you do not wish to use the central deployment option.

**The following steps are relevant only if you specifically want to install the client software manually on your network machines and you do not want to use the remote installation facility within the avast! Small Office Administration or the avast! Enterprise Administration console.**

To install the client software manually, you first need to download the client installation file.

If you have already purchased a license, you should have received an email from avast with instructions for downloading the installation file. Click on the link to download the file and save it onto your computer, or to any other portable medium such as a portable USB stick, which you can then use to install the client on your network computers. You should also make sure your license file is saved to the same location.

If you have not yet purchased a license and you want to use the product for a 30-day trial period before you purchase, download the installation file from [www.avast.com](http://www.avast.com). After clicking the “Download” button, you can choose whether to download only the client software, the client software together with the Small Office Administration Console, or the client software with the Enterprise Administration Console.

Select the option to download the Client only:



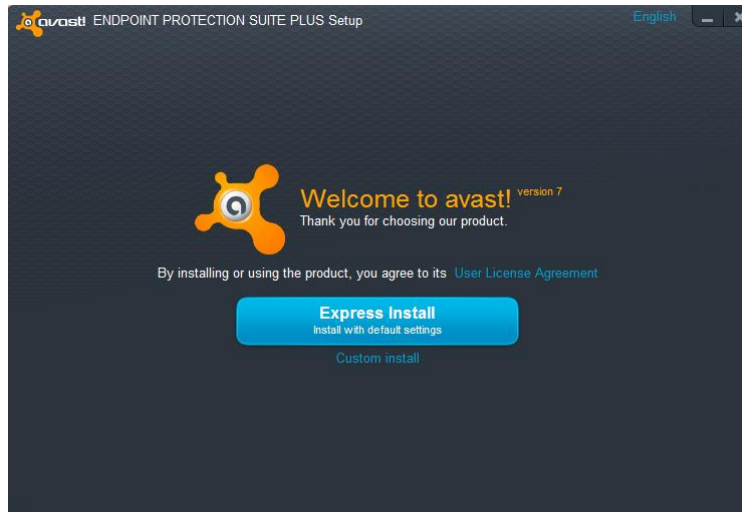
When downloading the installation file, make sure to save the file in a location on your computer where you will easily be able to locate it, or to any portable medium such as a portable USB stick which you can then use to install the client on your network computers.

The following pages will describe how to install the client software.

When you are ready to install the client on any network computer, just locate and double click the file to start the installation. You will then be guided through the rest of the installation process to install the program. We recommend that you close any other applications before installing the program and follow the onscreen instructions. Note: your computer has to be connected to the internet during installation process.



When the installation starts, you will see the initial Welcome Screen:

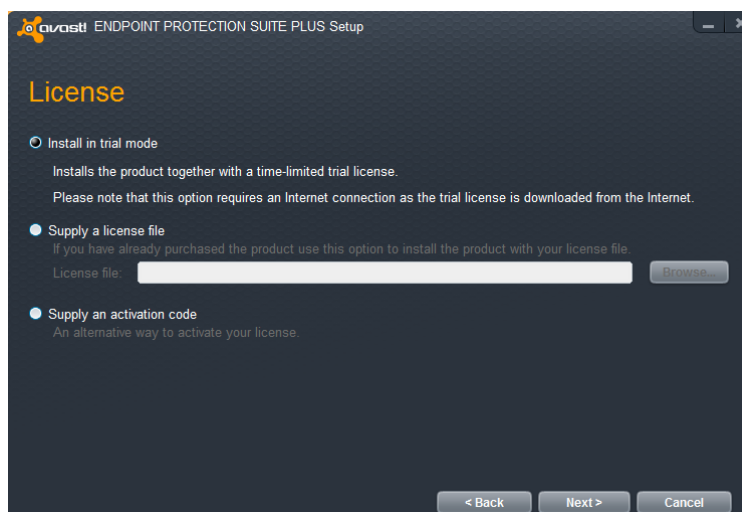


In the top-right corner, you can select your preferred language for the installation.

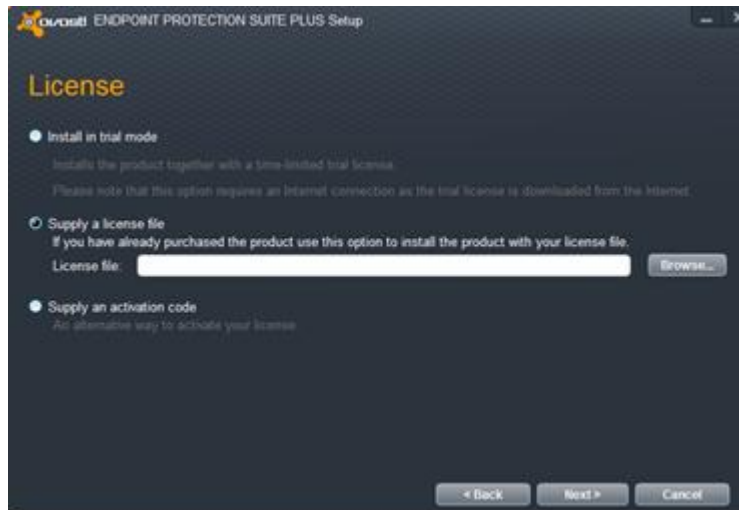
You can then choose the type of installation. For most users, it is recommended to select “Express Install”. However there is also a “Custom Install” option for more advanced users, which allows you to tailor the installation according to your specific requirements, for example you can select exactly which components to install.

In the next step, you have the option to use the program in trial mode, or to insert a valid license:

- If you wish to use the program in trial mode, you will need to be connected to the internet as the trial license will be automatically downloaded during the installation. You will then be able to familiarize yourself with the program for a trial period of 30 days, however you will need to insert a full valid license to continue using the program after the 30 day trial period.



- If you have already purchased a license and you have saved it on this computer or in another location where it can be accessed, use the “Browse” button to locate it. Click on the file to select it and then click “Open” and your license file will be automatically inserted. The program can now be used for the duration of the license.



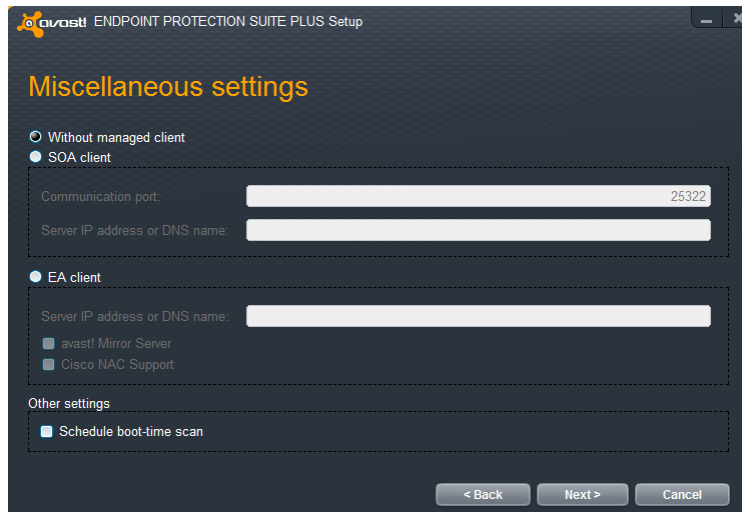
- If you purchased your avast antivirus with an activation code, you can enter it here to activate your license.

Then click “Next” to continue.

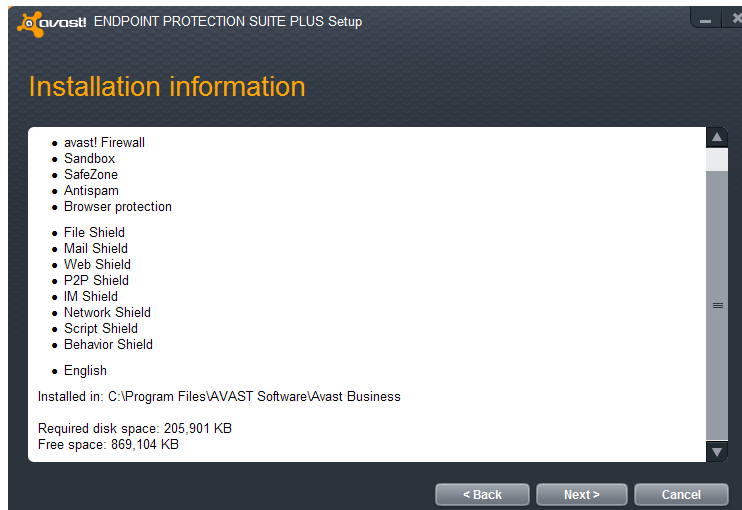
On the next screen you can select whether you want to install the unmanaged client – where you will not be using any central management console – or the managed client.

If you are installing the managed client, you should select here whether it will be connected to the Small Office Administration Console, or to the Enterprise Administration Console:

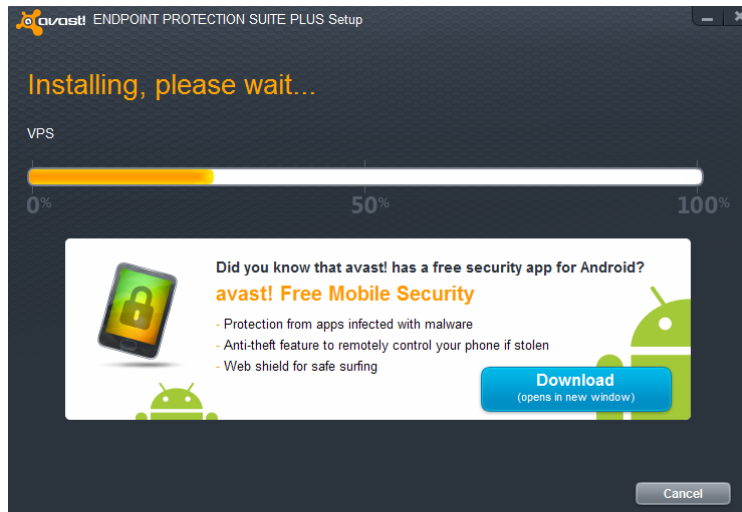
If you select one of the management consoles, you will need to enter a few additional details to ensure the console is able to communicate fully with the installed client.



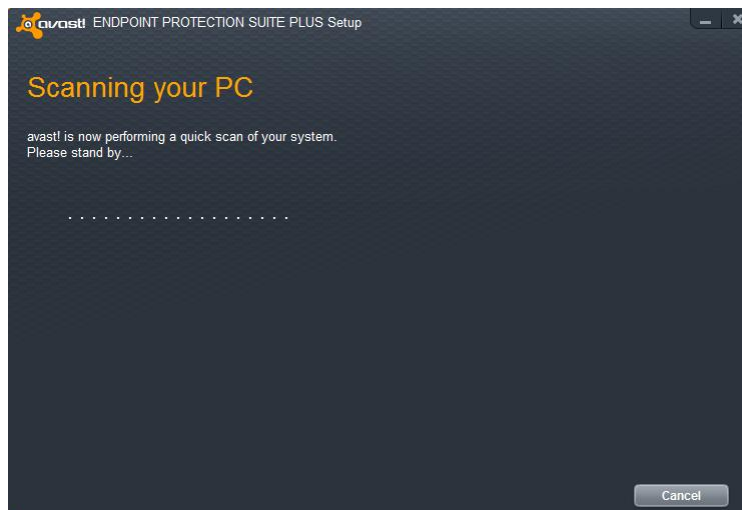
Finally, before the program is installed, you will see a summary of the installation information. To change anything, just use the “Back” button, then click “Next” to proceed with the installation.



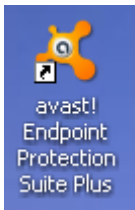
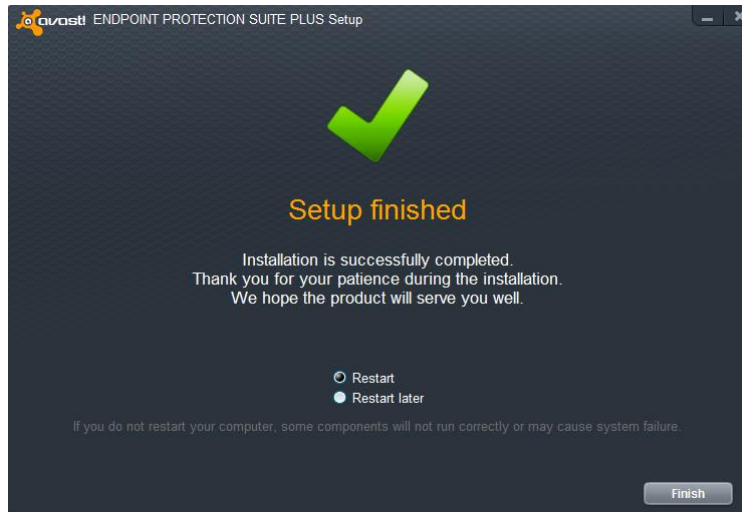
The installation may take a couple of minutes and during this time you will see the installation progress:




In the last step, avast! will carry out a quick scan of the computer to check that there are no pre-existing infections.



To complete the installation, you just need to restart the computer.



When the computer restarts, you should see the orange avast! icon on the desktop and the orange avast! ball in the system tray (close to the clock). 

Once you have installed the managed client on your network computers, they will be able to communicate with the management console, whether it is already installed, or even if it is installed later. For further information about managing the installed clients on your network, please refer to the Small Office Administration Quick Start Guide, or the 5-point start-up guide which appears when you launch the Enterprise Administration console.

**Thank you for choosing avast!**

