

avast! Business Protection (Plus)

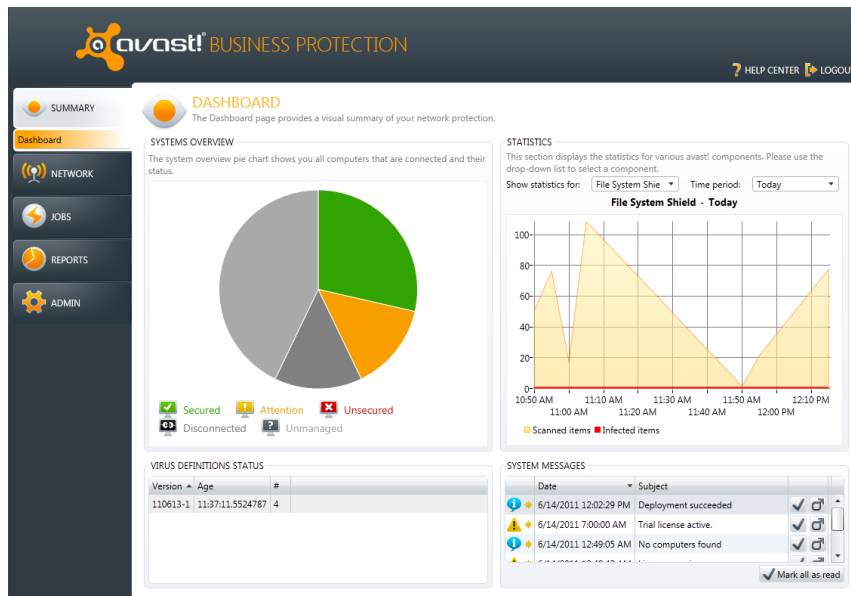
Quick Start Guide

Introduction to avast! Business Protection (Plus)

The avast! Business Protection and avast! Business Protection Plus products have been specifically designed to make the administration of your computer network as simple as possible. As well as providing protection for all the computers on your network, it also comes with a central web-based Administration Console that allows you to install avast! antivirus on all your computers remotely, to centrally manage updates and scheduled scans, to receive real-time security alerts and reports, and to receive automatic notifications whenever a new computer is connected to the network.

avast! Business Protection provides protection for all the computers on your network based on the award-winning avast! Pro Antivirus and avast! Server Edition. avast! Business Protection Plus provides all the same protection, with the addition of an antispam filter and silent firewall.

The Administration Console is designed primarily for small networks of up to 200 workstations. It's a simple and easy to use program to help you both deploy and manage avast! antivirus on your network and so keep your network free of viruses and other malware. The avast program which is deployed on your network computers is referred to throughout the rest of this user guide as the "Managed client".



The Administration Console is a web based system and does not require a server Operating System. Once installed, you can access it from any computer with an internet connection.

Key Features

	avast BP	avast BP+
DESKTOP:		
Supports the 64-bit platforms of Windows Vista and Windows 7		
Antivirus engine including anti-spyware		
Boot time scanner scans for infections before the operating system starts and before a virus can be activated		
Multiple real-time shields continuously monitor your network for potential infections and suspicious activity		
avast! Sandbox allows you to browse the web or run other applications in a safe “virtual” environment		
avast! SafeZone – creates a new desktop in which applications can be run invisibly, ideal for online banking, shopping etc		
avast! CommunityIQ –ensures the most up to date virus definitions based on the experience of the global avast! community.		
avast! WebRep – provides information on a website’s reliability based on feedback from the avast! community		
Wake-up/scheduled scanning allows you to schedule scans to be run even when the computer is not in use		
Intelligent Scanner uses a whitelist of safe applications to reduce the number of files that are scanned.		
Silent/Gaming mode automatically detects full-screen applications and disables pop-ups without compromising security		
Green computing: leaves a minimal environmental footprint due to its highly efficient use of resources		
Antispam and phishing filter to help manage unwanted emails		
Silent firewall stops hackers using heuristic and behavioral analysis.		

Key Features

	avast BP	avast BP+
SERVER:		
Integrated protection for both email and file server: includes support for clustering (even in active-active mode) and integrates perfectly with exchange via Microsoft's own Virus Scanning APIs.		
SharePoint Server Plug-in: tightly integrates with SharePoint 2003/2007/2010 servers via Microsoft's own AV interfaces		
Low resource requirements: light on system resources		
CENTRAL ADMINISTRATION:		
Web-based console displays all current issues and recommended solutions		
Easy to navigate interface offers user friendly access to all program functions		
Built for simplicity: does not require full network administrator skills to operate		
Remote installation and updates saves time and cost of traditional deployment on individual workstations		
Auto-discovery of new/unprotected computers whenever they are connected to the network		
Ability to remotely schedule and run scanning jobs – jobs can be scheduled to run at night or whenever computers are not in use.		
Real-time alerts are sent immediately to the console when any infection or suspicious activity is detected		
Comprehensive reporting allows you to define what is reported and how often		

System Requirements

The following system requirements are recommended in order to install and run **avast! Business Protection (Plus)**:

Business Protection Server:

- Microsoft Windows XP, Service Pack 3/Windows Vista (any edition, excluding Starter Edition)/Windows 7 (any edition, 32 or 64 bit, except Starter Edition and Home Basic Edition), Windows 2003 Server (all editions), Windows 2008 Server (all editions)
- 1 GB RAM
- A minimum of 500 MB free hard disk space for the initial installation
- Internet connection (to download and register the product, for automatic updates of the Mirror)
- Valid SMTP Server within reach of the server
- Windows workgroup or active directory network

Administration Console:

- Microsoft Windows XP, Service Pack 2/Windows Vista/Windows 7 (any edition, 32 or 64 bit), Windows 2003 Server (all editions), Windows 2008 Server (all editions)
- 128 MB RAM or above
- Internet connection with Silverlight 4 enabled browser

Managed client for servers:

- Windows Server 2000/2003/2008/R2
- 256 MB RAM (512MB if running Windows server 2008)
- 300 MB of free hard disk space

Managed client for workstations (avast! Business Protection):

- Windows 2000 Professional Service Pack 4, Windows XP Service Pack 2 or higher (any edition, 32 or 64 bit)/Windows Vista (any edition, 32 or 64 bit)/Windows 7 (32/64 bit)
- 256 MB RAM
- 350 MB free hard disk space

Managed client for workstations (avast! Business Protection Plus):

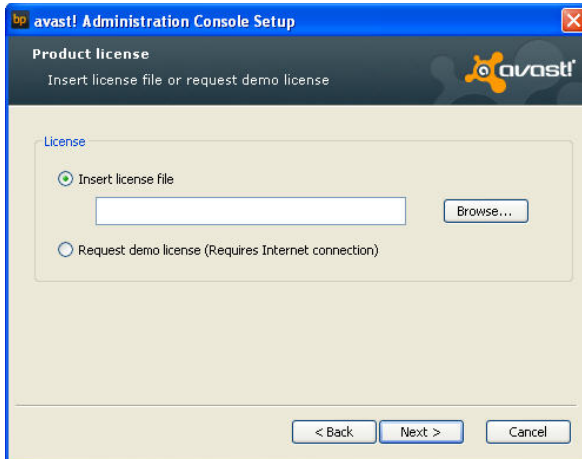
- Windows XP Service Pack 2 or higher (any edition, 32 or 64 bit)/Windows Vista (any edition, 32 or 64 bit)/Windows 7 (32/64 bit)
- 256 MB RAM
- 370 MB free hard disk space

Note:

avast! Small Business Console and managed clients are not supported (cannot be installed and won't run) on DOS, Microsoft Windows 3.x, Microsoft Windows NT 3.x, Microsoft Windows NT 4.0, Microsoft Windows 95, Microsoft Windows 98, Microsoft Windows ME, or any other operating systems which aren't specified as supported.

Licensing

avast! Business Protection (Plus) can be used in trial mode for up to 30 days, during which time you can familiarize yourself with the basic functions of the administration console. During the installation process, you will have the option to:

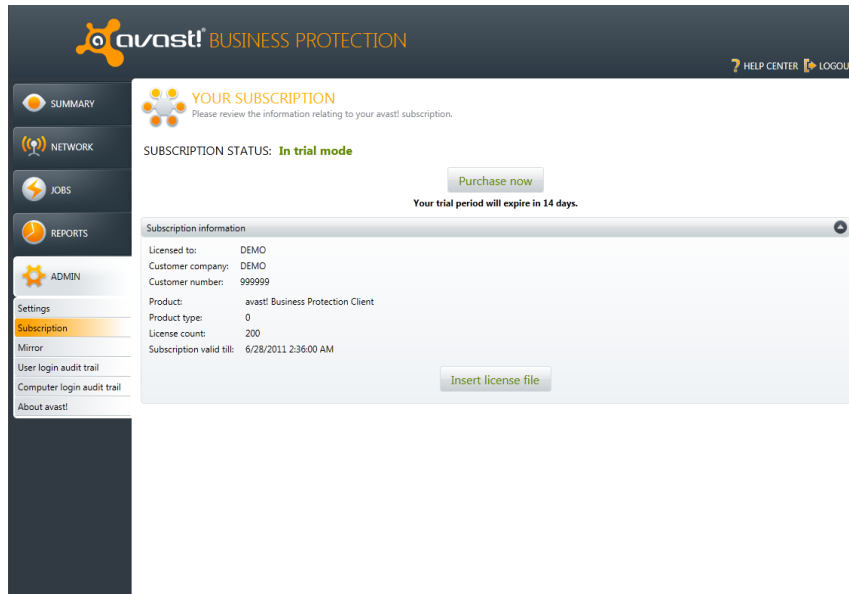


- insert a license, or
- request a demo license.

If you have already purchased a license and saved it on your computer, click Browse to locate it, click on it to select it and then click "Open". Your license should now appear in the box shown on the screen above.

If you want to use the program in demo mode, you will need to be connected to the internet as the demo license will be automatically downloaded from the avast server during the installation. You will then be able to familiarize yourself with the layout and basic functions of the console for a trial period of 30 days, however you will need to insert a full valid license to continue using the console after the 30 day trial period.

To manually insert a license after the program is installed, click on the “Administration” tab in the Console, and then “Subscription”. Click on “Subscription information” which will reveal your current subscription status. Next click on “Insert license file” and then locate the license file on your computer. Click on it to select it and then click “Open” and your license file will be automatically inserted. You can now continue to use the program for the duration of your license.



If you have not yet purchased a license file, click on “Purchase now” which will open the avast website where you can select the type of license you wish to purchase.

How to install avast! Business Protection (Plus)

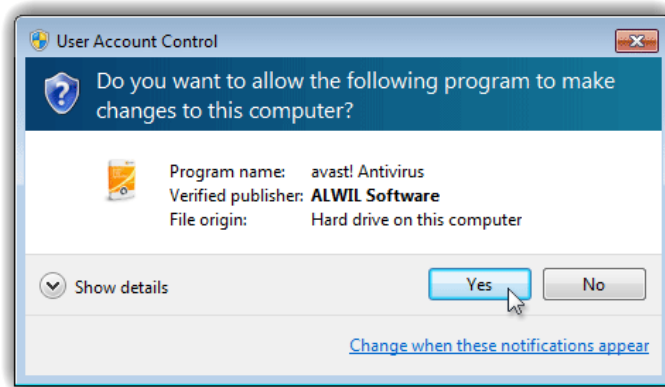
Download the avast! Business Protection (Plus) installation file from www.avast.com and save it onto your computer, in a location where you will easily be able to locate it, for example on your Windows Desktop.

Next locate the downloaded setup file Sbc_Setup.exe (depending on your system preferences, the file extension may be hidden), on your Windows Desktop, for example.

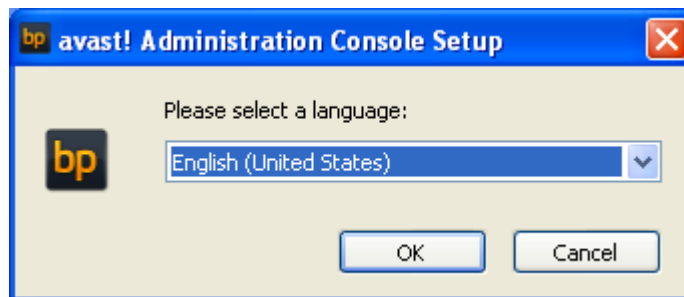


Now double click on the installation file to run it and you will be guided through the rest of the installation process to install the program on your computer.

If you are prompted by a **User Account Control** dialog for permissions, click **Yes** (or **Continue** in **Windows Vista**) to begin the installation process.



Before the installation starts you can select your preferred language:

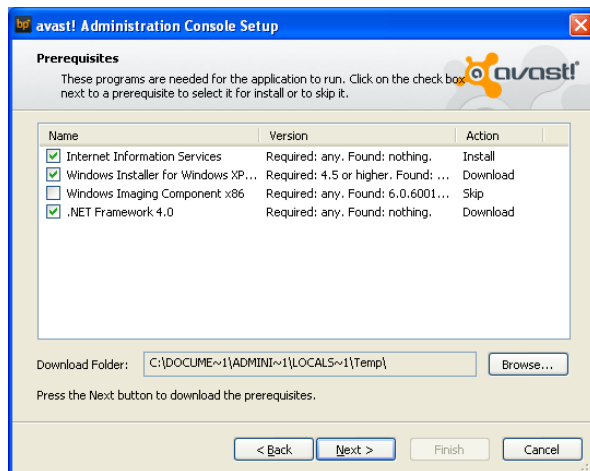


A quick check will now be done to identify whether there are any other requirements before the program can be installed.

If any requirements are identified, the following screen will then be displayed:

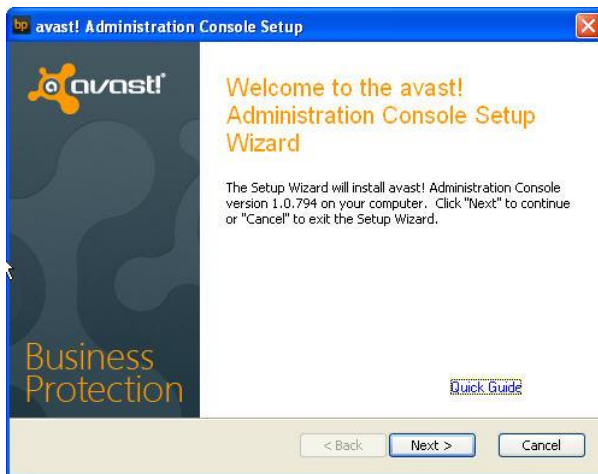


Just click “Next” to proceed and you will then see a list of the pre-requisites which need to be satisfied before the program can be installed.

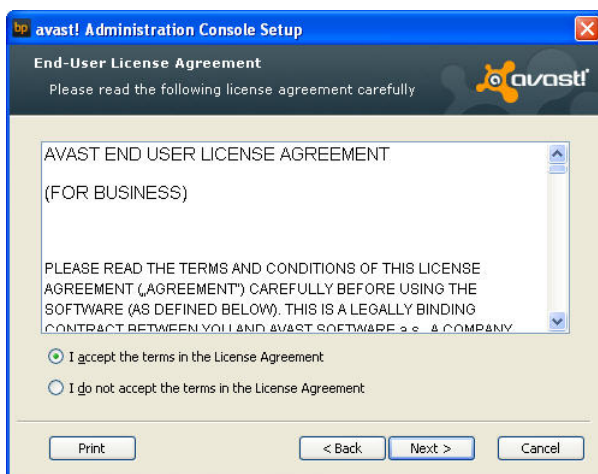


Click “Next” again and you will then be guided through the installation of the pre-requisites.

Once the pre-requisites are installed, or if no pre-requisites are identified, you will see the initial screen of the SBC Setup Wizard.

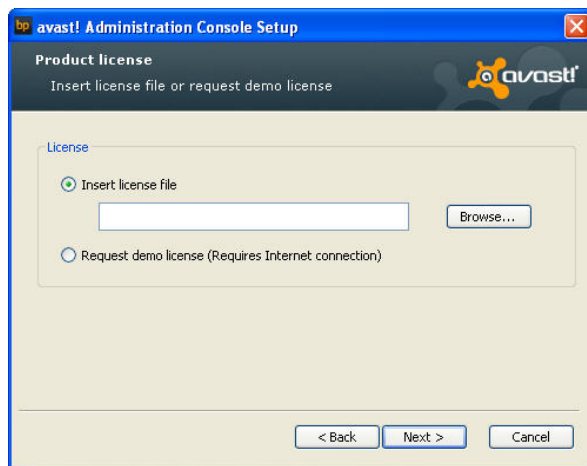


You now need to confirm that you have read and accept the terms of the license agreement by clicking the appropriate button and then click "Next" to proceed.

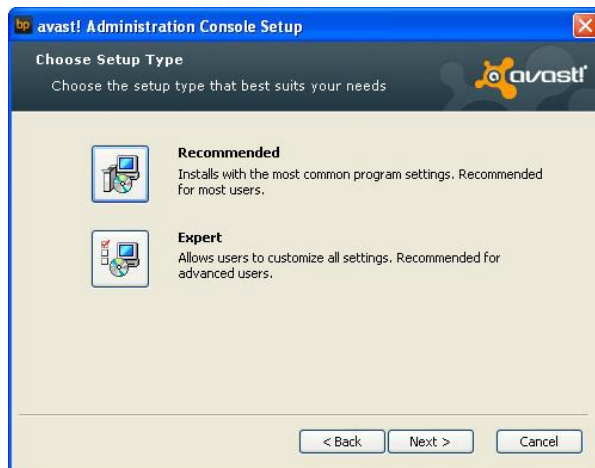


You will now be invited to insert a valid license file. Unless you want to use the program first in demo mode, it is recommended to provide a license file immediately.

Alternatively, you can request a demo license, which will allow you to use the program in demo mode for 30 days. However you will need to insert a full valid license to continue using the program after the trial period. To request a demo license, you will need to be connected to the internet as the demo license will be automatically downloaded from the avast server during the installation.



You can now select the type of installation. The recommended installation type is "Recommended" unless you are an experienced system administrator and want to e.g. specify a folder other than the default folder for storing the installation files or use your own MS SQL Database. For custom installations, please refer to the Administrator's Guide to the Administration Console.



On the next screen, you should enter the details of your email settings. This is necessary if you want to be able to send emails from the Administration Console for example if you want to use the option to deploy the avast client remotely by email (see later in this guide)

avast! Administration Console Setup

Email Configuration
Specify settings for email configuration

Administrator's E-mail:

SMTP Server Address:

SMTP Server Port:

Use Authentication

Username:

Password:

Use SSL

< Back Next > Cancel

Finally, you will be asked for a password which you will need to enter later when logging on to the Administration Console, so make sure it is a password that you will be able to remember!

avast! Administration Console Setup

Console Configuration
Specify Console Details

Enter a password which the "admin" user should use to log in to the console.

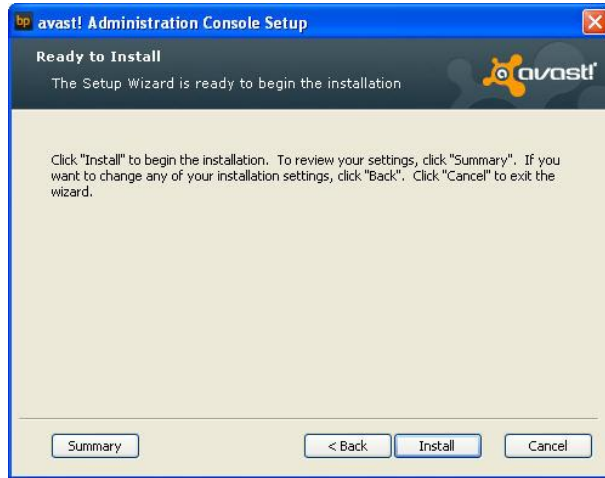
Password:

Confirm password:

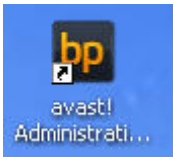
Create desktop shortcut to open the console in your web browser

< Back Next > Cancel

You will now see a final screen before the installation begins. To review all the initial setup details and to check everything is correct, just click on Summary. You can use the “Back” button to go back and make any changes and when you are ready just click “Install”



When the installation is complete, a new box will appear with a link, which you can click to open the Administration Console in your computer's web browser.

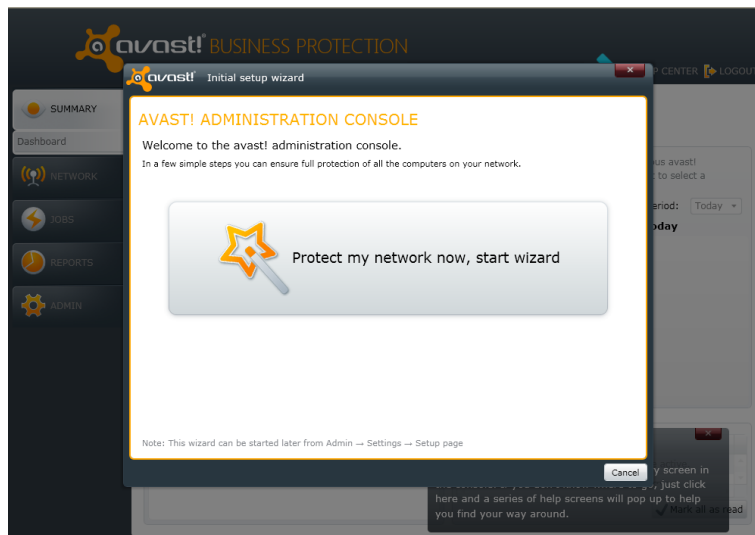


A shortcut will also be installed on your desktop which you can use in future to launch the console on the same computer.

The Administration Console

You can open the console via the shortcut installed on your desktop or by clicking the “Start” button in the bottom left corner of your computer screen and selecting “avast Administration Console” from the list of programs installed on your computer. You can also access the console from any other computer with an internet connection by simply copying or typing the location into the computer’s web browser. Then, just enter the user name “Admin” and the password which you provided during the installation process.

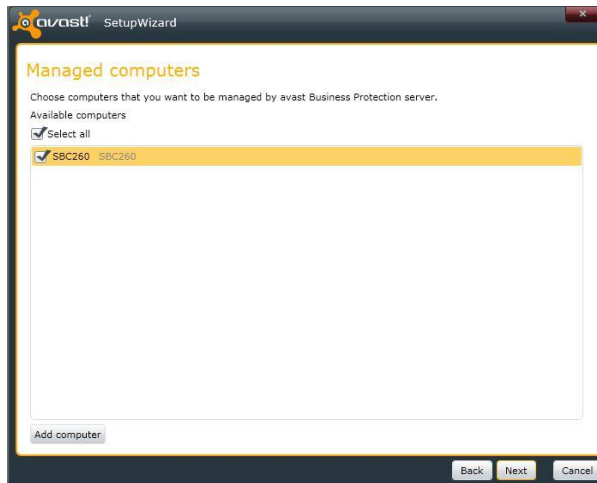
When you open the Business Protection Console for the first time, you will first see the system “Dashboard” and the initial setup wizard:



The Initial setup wizard will help you to deploy the avast! client on the computers in your network. The wizard works in a network with a windows domain controller, as well as in a network with computers in a workgroup.

Click on “Protect my network now, start wizard” to start the wizard or “Cancel” if you want to deploy the clients manually.

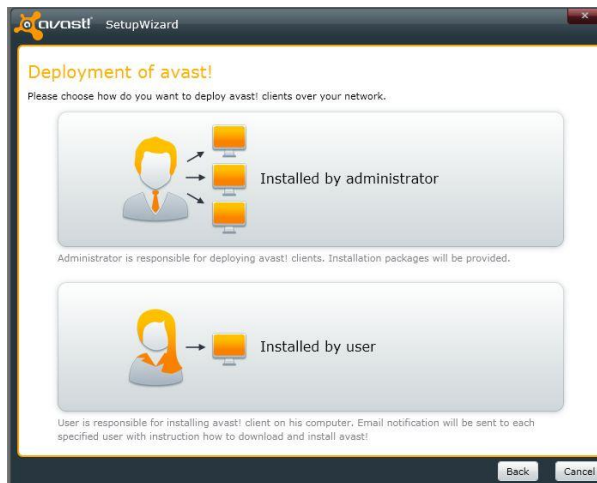
You can now see any computers that have automatically been detected. Select those that you want to be managed by the avast! Administration Console.



Note: If any of your network computers are not listed, they can be added by clicking on “Add computer”. The avast! client will not be deployed on any computers that are not listed on this screen.

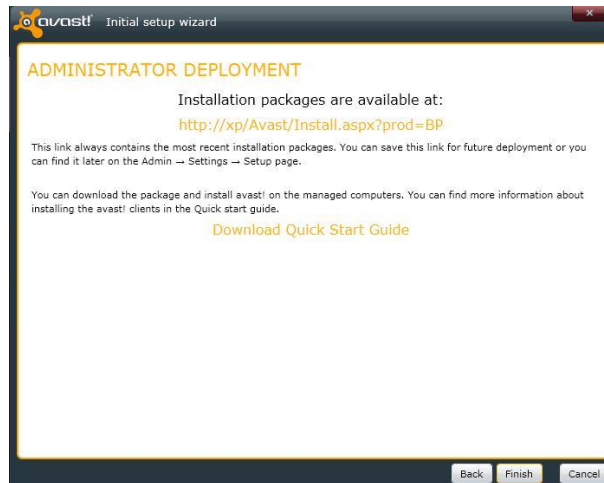
When you click “Next” the next steps will be depend on whether your computers are networked as a workgroup or a domain.

Initial setup wizard for workgroups

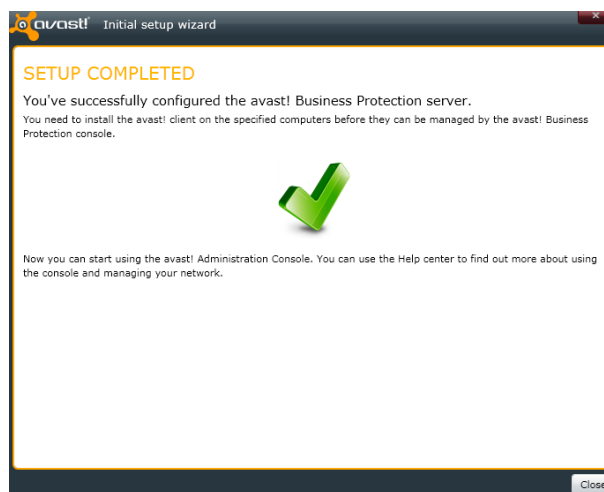


In a workgroup you can choose whether the avast clients will be installed manually on all computers by one person (the administrator) or whether the individual computer users will receive an email with a link to the installation package. In both cases running the installation package will install the avast! client which will then connect to the avast! Administration Console automatically.

If you select the option to have the clients “Installed by administrator” you will see the following screen:



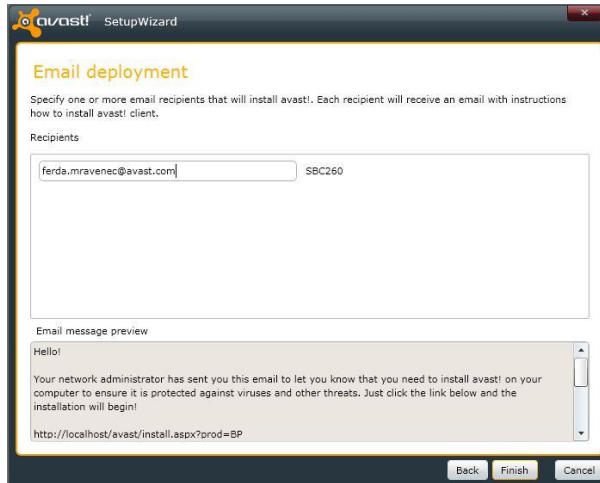
You can download the installation package by clicking on the link.



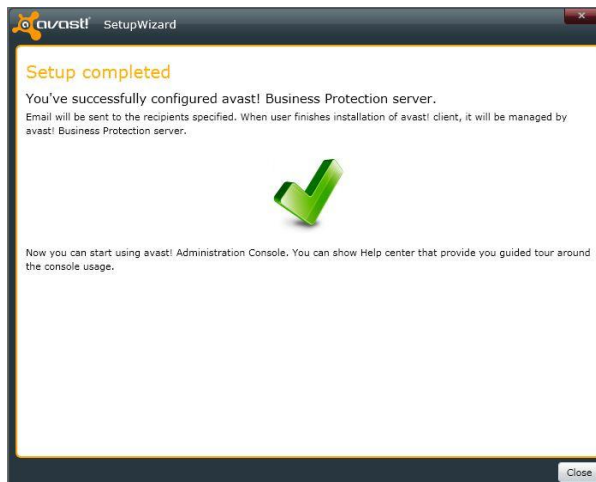
The installation file then needs to be run on each computer in the workgroup to install the client. You can either save the file on an external medium e.g. a flash drive and run it on each computer from there, or download the file on each computer by copying the link into its web browser.

As soon as the avast! client is installed on a networked computer, it will start to communicate immediately with the console.

Alternatively, you can create an email to the individual computer users on the network, which will include a link to the installation package.



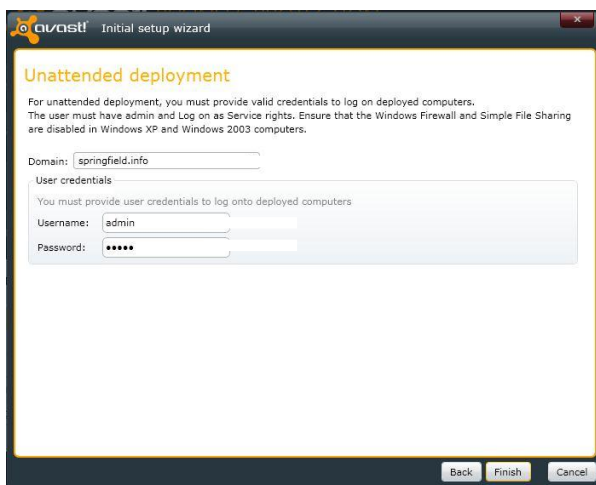
Each user will then need to download the installation package and run it on their computer to install the avast! client.



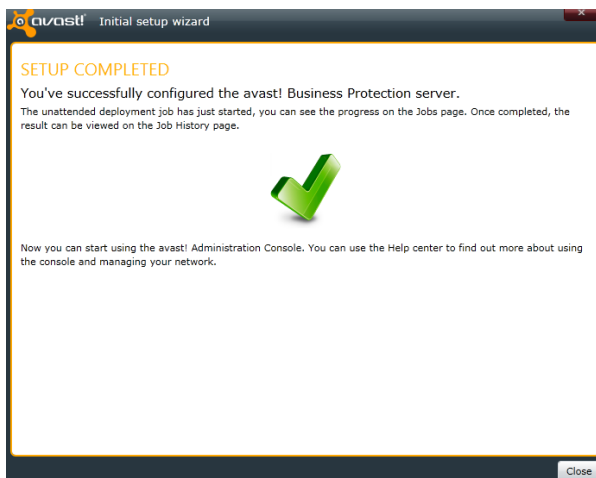
As soon as the avast! client is installed on a networked computer, it will start to communicate immediately with the console.

Initial setup wizard for domains

You need to enter a valid domain administrator username and password.
Example: username MYDOMAIN\administrator, password: *****

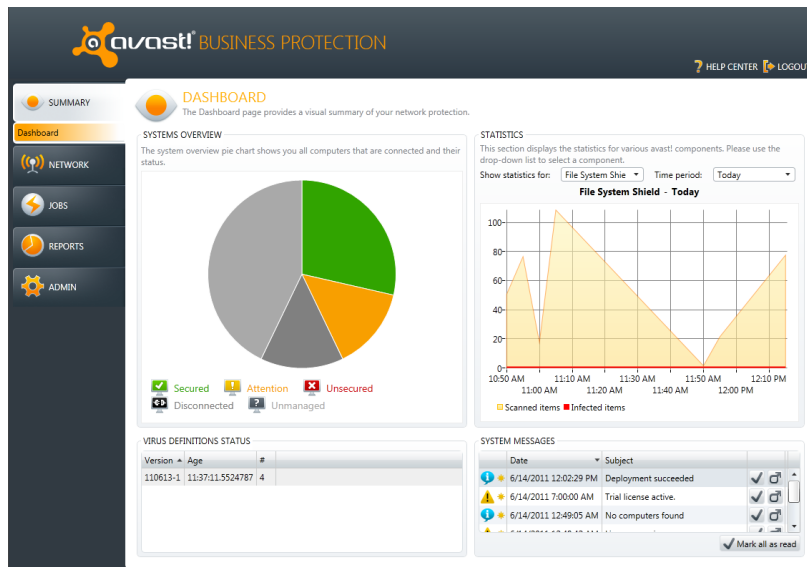


Then click on Finish to proceed with the installation. The deployment of the avast! clients will then start automatically and you will see the following screen confirming that the deployment is in progress:



You can check the progress of the installation on the Jobs screen of the Administration Console and once completed, you can see the result on the Job History screen.

Once the initial setup is complete, the main summary page will appear.



The dashboard shows information about the current status of the network and is divided into four main parts:

Systems overview

Here you can see a circular chart, which may be divided into different colored segments representing the current status of all the computers that the Console has detected. The meaning of each of the colors is later in the section **“Deploying avast! on your Network”**. Initially, until avast! is deployed on the network, this will be completely grey.

Virus definition status

This information helps you to maintain the maximum possible virus protection, by showing you the virus database version, date and number of computers that have this VPS installed. This will help you to ensure that you always have the most up to date virus definition and that you are protected from the latest threats.

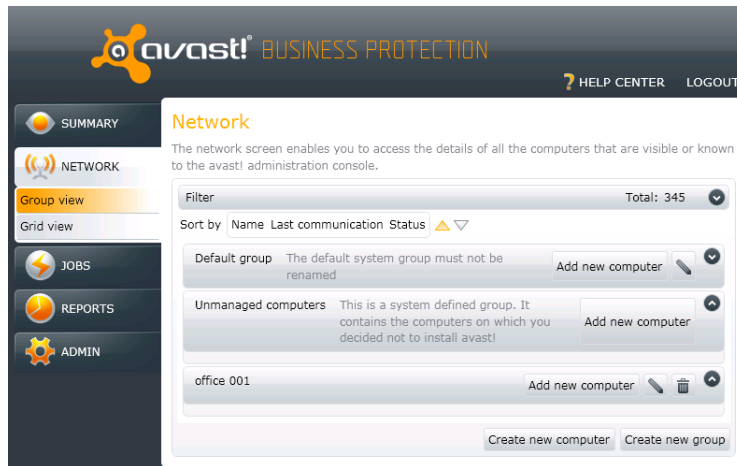
Statistics

This section displays statistics for each of various avast! components. By clicking on the drop-down menu, you can select the required component. Statistics can be displayed for a single component and a specific period of time. Currently the statistics chart allows you to view the number of scanned items and the number of infected items.

System messages

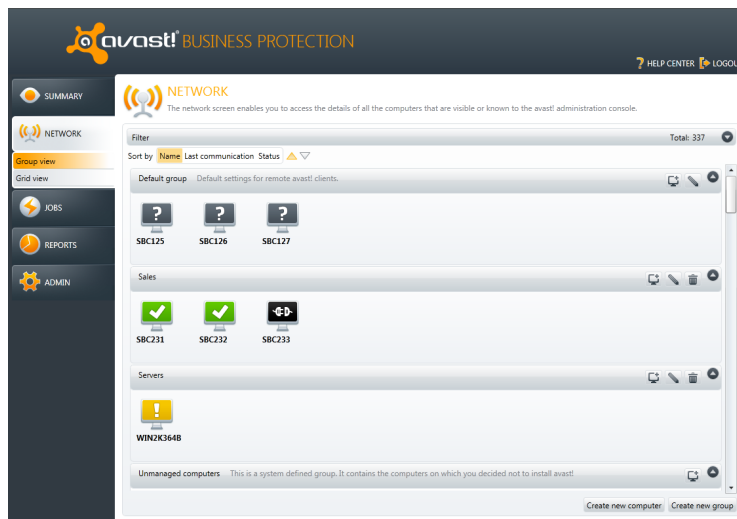
This section shows all important system messages related to the Administration console and clients e.g. if your license will expire soon, a deployment job failed, a new computer has been detected, any connection problems with specific computers etc.

In the “Network” tab, you can see all of the computers that have automatically been detected.



All computers that have been discovered automatically are initially allocated to the same “Default group”.

Click on the down arrow button to open the default group and you will see all the detected computers presented as individual icons.



Any detected computers on which the avast! client has not yet been installed will be displayed as grey icons, meaning that they have been detected but have not yet communicated with the console.

Connected computers will only be able to communicate with the console after the managed client has been deployed on them. They should then appear as green, which indicates that avast is installed and is running normally. See the next section, “**Deploying avast! on your Network**”.

To add a computer that has not been automatically discovered, just click on “Create new computer”, enter the name of the computer and a description, and then select the group to which it should be assigned.

If you need to check the computer name, click on the “Start” button in the bottom left corner of the computer screen, then right-click on “Computer”, then click “Properties”. You will find the computer name in the new window that opens.

New groups can be created for the purpose of creating special group settings and group jobs. For example, separate groups can be created for servers, or different groups of workstations with different security levels e.g. different combinations of active/inactive shields. Just click “Create new group” in the bottom right corner and then enter a name for the new group and a description.

You can then manually edit all the settings for the new group, by clicking on the pencil icon in the top right corner, or you can copy the settings from an existing group and edit them later as required.

Computers can be moved from one group to another and if a computer is moved to a new group, the avast settings for that computer will be updated immediately based on the settings for the new group.

Deploying avast! on your Network

This section describes how to deploy avast on your network if it was not deployed by the initial setup wizard, or if you have subsequently added more computers to your network on which the avast! client also needs to be installed.

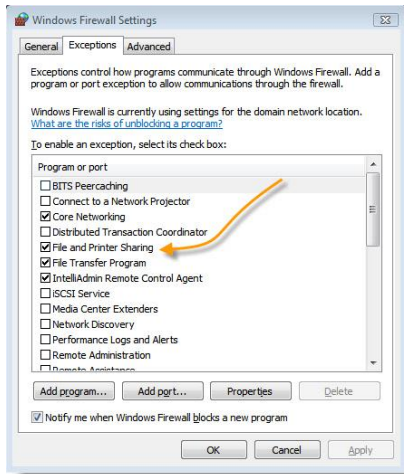
Once all computers have been discovered or manually added, allocated to the required groups, and the settings edited as required, the avast managed clients can be deployed remotely via the avast! Administration Console.

Notes:

- Any existing version of avast! which is already installed on a network computer will not be able to communicate with the console and if detected initially, will only ever appear as a grey icon.
- Therefore, when the deployment job is run, if any version of avast! is already installed on any computer, it will be automatically uninstalled and replaced with the new managed client, which will then be able to communicate with the console.
- When an avast client is deployed, it will be deployed with all the settings according to the group to which it is allocated in the Administration Console.

Computers can still be moved to a different group after the managed client has been deployed and the settings will be updated immediately based on the settings of the new group.

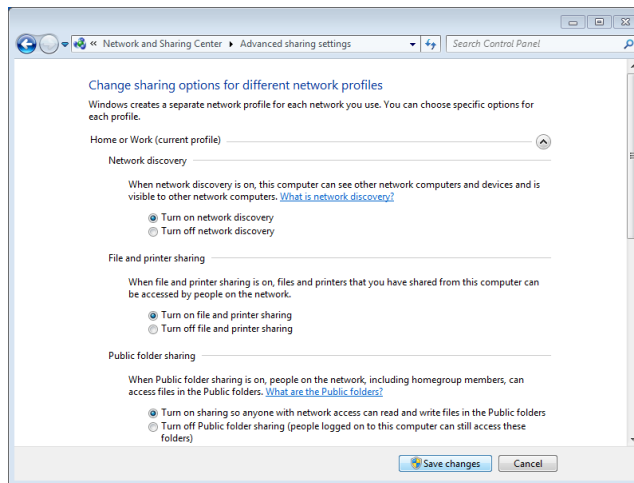
Before attempting remote deployment, check that “Enable File Sharing” is turned on (checked) in the Windows Firewall settings of each computer.



In Windows XP or Windows Vista, open the computer’s control panel and from there open the “Security” section. Next go to the “Windows Firewall” settings and select the “Exceptions” tab. Now you just need to make sure that the “File and printer sharing” box is checked.

In Windows 7, open the control panel and then click “Network and Internet”. Next open the “Network and Sharing Center” and from there click on “change advanced sharing settings”.

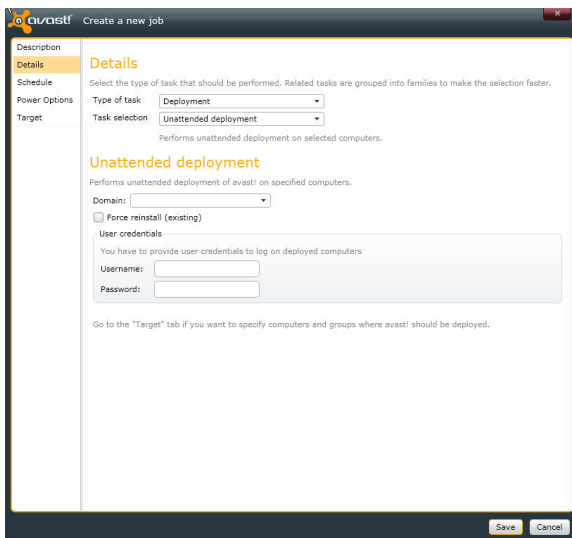
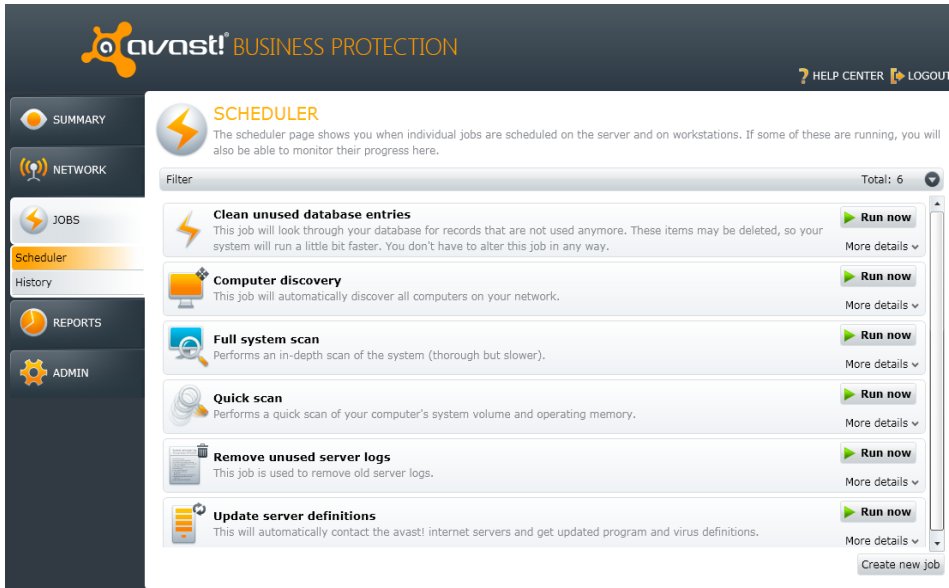
Now you just need to open the settings for your network and select “Turn on file and printer sharing”.



If the computers are part of a “windows domain”, this can be done for all computers through the server, otherwise it will need to be done manually on each computer. However, in a network where information is already being shared between computers, it is most likely that this function is already turned on.

Remote Deployment

To deploy the avast client remotely on the network computers, go to the Jobs screen, click on “Create new job”.



In the “Description” box, enter a name and a description for the new job.

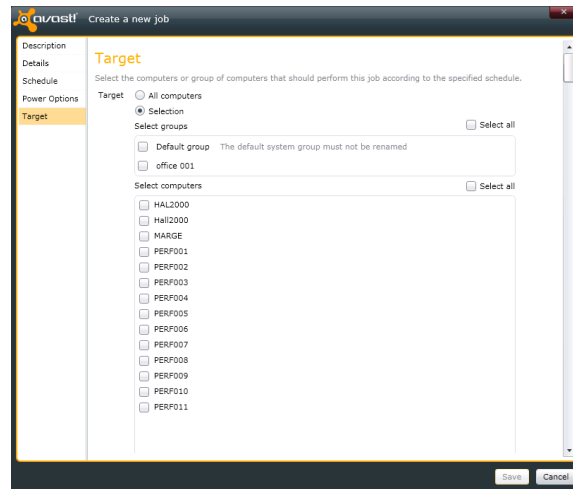
Next, in the “Details” box, select “Type of job” = “Deployment” and “Job selection” = “Unattended deployment”, then enter the username and password for the specific computer. If the user is a domain user, don’t forget to include the domain name e.g. domain\user.

If the computers on which you want to deploy avast client are in a “windows domain”, you just need to provide the administrator level username and password, then in the “Target” section select “All computers” to deploy avast on all computers in the domain, or select the specific computers on which avast should be deployed.

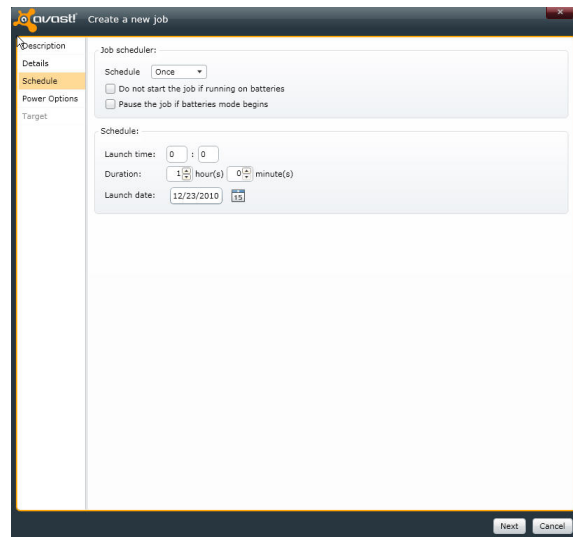
If any computers are not part of a “domain”, you will need to install avast separately on each computer, by creating a separate job for each installation and providing the specific username and password for that computer.

Next, in the “Target” section for the specific job, select the computer or group of computers on which the avast client is to be deployed.

Note that if any version of avast is already installed on a computer, this will be replaced with the new managed client when the deployment job is run.

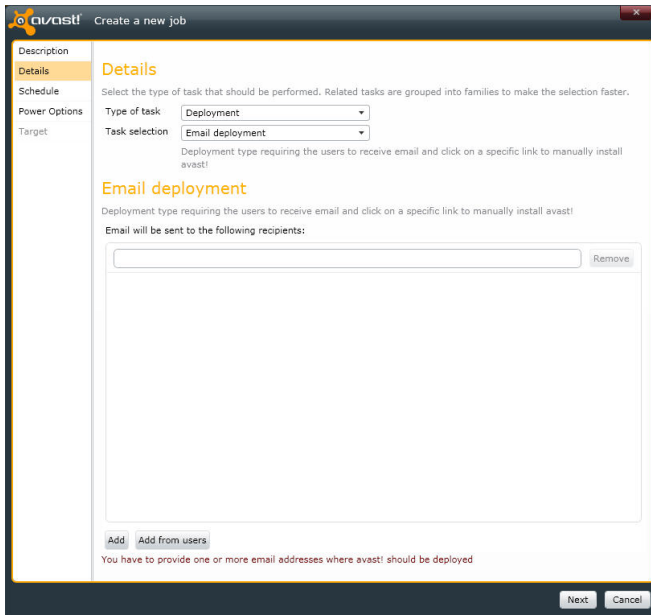


You can then run the job immediately by returning to the main screen and clicking on the green arrow, or you can schedule a time for the job to be run later.



Manual Deployment

Alternatively, you can send an email (with a link to the avast installation package) to each user who then installs avast on his own computer. In the “Jobs” section, click on “Create New Job”, provide a job name/description, then in “Type of job”, select “Deployment” and in “Job Selection”, select “Email deployment”.

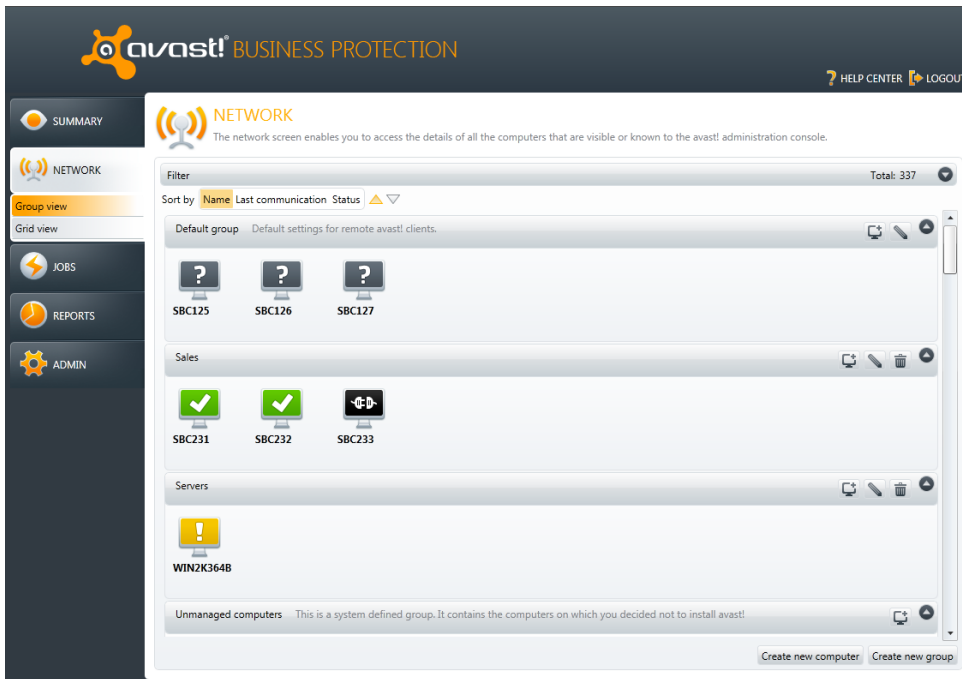


Enter each email address to which the link should be sent, or, to select the email addresses from a list of current users, just click “Add from users” at the bottom of the screen. You can then run the job immediately or schedule when the email should be sent.

Running the job will result in an email being created automatically which will contain a link to download the avast installation file. The email will be sent to each of the selected users for whom an email address was provided in the previous step.

The computer user then only needs to click on the link to start the download and run the installation.

As soon as the avast! client is installed on a networked computer, either remotely or by email, it will start to communicate immediately with the console, and in the Network tab it will now be shown in a different color, indicating that communication is now active.



The colors represent the status of the computer:



A green icon means everything is up to date and running as it should be.



A yellow icon means you are not fully protected, for example, if the program or your virus definitions are not up to date, or if one or more of your shields is currently turned off.



A red icon indicates you are currently not protected at all, most likely because all of the shields have been turned off.



This icon indicates that the computer has been detected but has never communicated with the Administration console, for example, if the avast! client has not been installed.

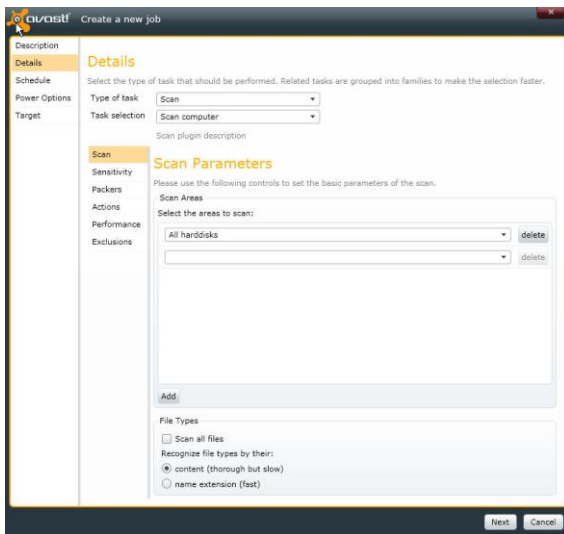


This icon indicates that the computer hasn't communicated with the Administration console recently (the default value is 30 seconds). This doesn't necessarily mean anything bad. e.g. computers that are turned off will have this icon.

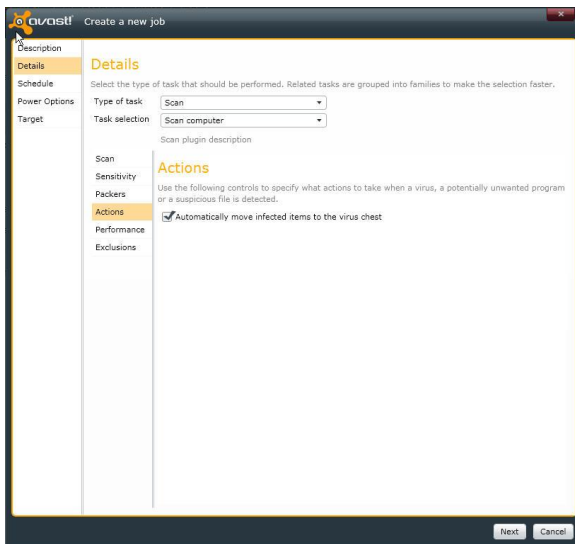
Using the Administration Console to manage your network

After all computers are connected and the avast! clients have been installed, create any special jobs that you want to run on a regular basis. A number of pre-defined jobs are provided by default, but these can be edited as required, for example it is necessary to specify the “Target” computers before running any job.

To create a new job, just click “Create new job” in the “Jobs” section, enter a name and description, then in the “Details” section enter the “Type of job” and “Job selection”.

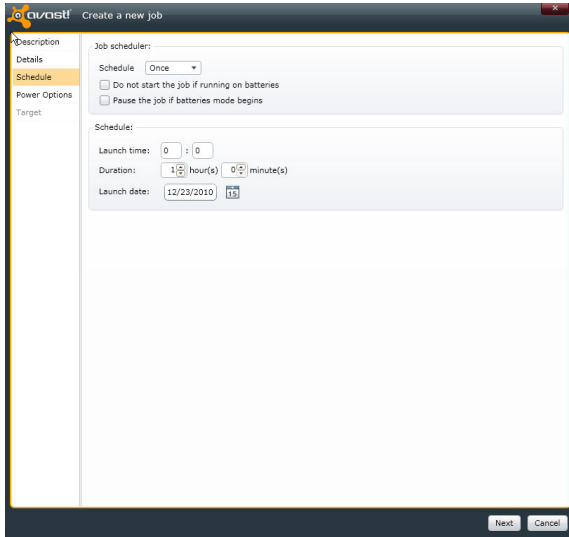


The various parameters associated with creating a new scanning job are exactly the same as those in the non-managed avast! Pro Antivirus and avast! Internet Security.

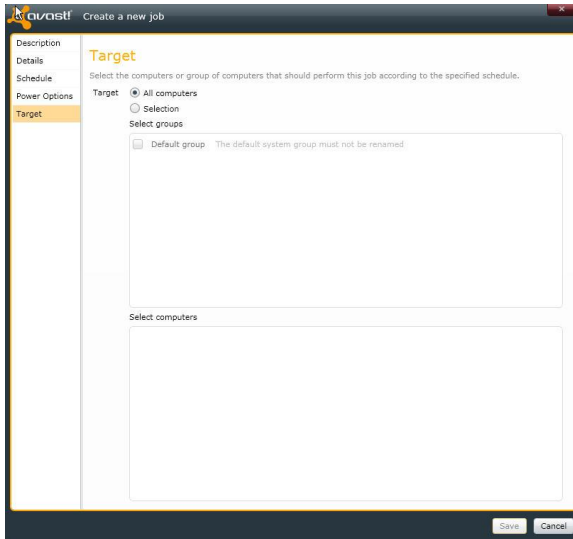


For example, on the Actions page, you can specify that any infected files that are detected should be moved automatically to the virus chest.

Full details describing all of the various settings can be found in the Administrator's Guide to the avast! Administration Console.



You can also set a scheduled time for the job to be run...

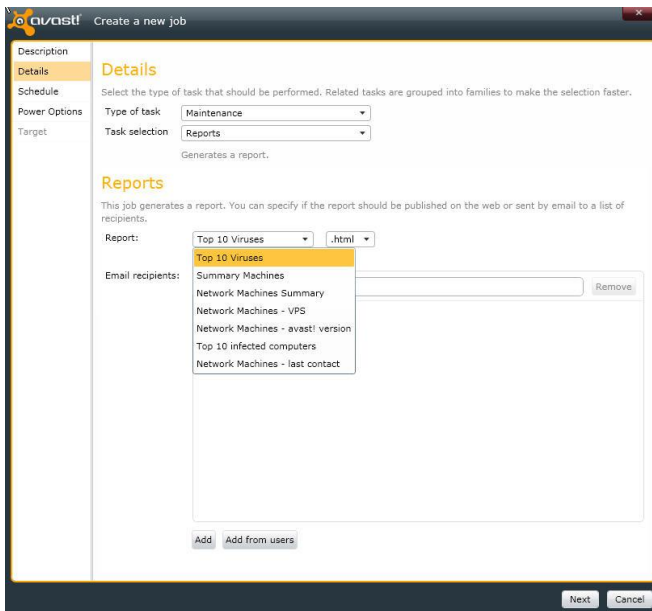


and if appropriate, define the target computers on which the job should be run.

Reports and Notifications

In the “Reports” section, you can generate specific reports and you can also access the various logs created by the computers on the network.

Regular reports about the status of the networked computers can also be scheduled to be created automatically and sent by email to specific recipients – Click on “Create new job” then in the “Details” section, select “Type of job” = “Maintenance” and “Job selection” = “Reports”. You can then select the report to be created and enter the email addresses of the people to who the reports should be sent. To select the email addresses from a list of current users, just click “Add from users” at the bottom of the screen.



The avast! Mirror

The Mirror, which was installed automatically during the installation, automatically receives updates from the avast! server and distributes them automatically to all the managed clients on your network to ensure they are always completely up to date.

The great advantage of using the Mirror to distribute updates in this way is that the updates need to be downloaded only once from the avast Update server, thus saving you valuable bandwidth.

Although the mirror is updated automatically, you can also manually update it to make sure that you have the very latest copy of the update server at any given moment. To ensure you have the very latest updates and virus definitions, just run the job “Update Server Definitions” on the “Jobs” screen.

Thank you for choosing avast!

